

# CLEMSON GEORGIA



MONDAY

TUESDAY

WEDNESDAY

THURSDAY

FRIDAY

**DAD'S DAY**

# SATURDAY

OCTOBER 1, 1955

CLEMSON MEMORIAL STADIUM

"WHAT IT WUZ, WUZ FOOTBALL"

# CLEMSON GAMES

## WAIM-TV

For over 20 years  
Anderson's Listening Habit!  
Established 1935  
First CBS Station in S. C.  
All the Clemson Games!

CBS - - - CBS - - - CBS

## WAIM

All the Clemson Games!  
Plus  
39 Other  
Football Classics  
On Channel 40

CBS - - - CBS - - - CBS

## WCAC-FM

(Named for Clemson)  
News — Sports — Music  
Most Powerful CBS  
Station in South Carolina  
Serving 5 States

CBS - - - CBS - - - CBS

These stations carried more football games in 1954 than any similar group in the U. S. A. ! "If the Clemson Tigers went to Hades (to play football) WAIM would be right in there broadcasting the game ! " Always "Firstest with the Mostest" of Clemson Sports !

We Salute CLEMSON COLLEGE, in reality CLEMSON UNIVERSITY !

After you Hear or See 'Em, Read About the Games in Anderson's Daily Newspapers,  
THE INDEPENDENT and THE DAILY MAIL

PAID CIRCULATION OVER

# 50,000

Leading all newspaper in North and South Carolina in circulation growth for the last 10 years !  
Designed for ease in reading by Gilbert Farrar, world's foremost typographer !

FIRST in America in Community Service. (Only newspapers in U. S. A. to twice receive The University of Missouri Plaque.)

FIRST South Carolina newspapers to sponsor series of radio broadcasts to publicize the state's natural resources to the nation.

FIRST newspapers in S. C. to install a complete photographic and engraving plant.

FIRST newspapers in South to be chosen by Northwestern University for a readership study.

Among few newspapers of nation

having more paid circulation than population of city in which they are published.

**The Independent** and **The Daily Mail** are the exclusive sponsors of gains of any newspapers in the two Carolinas during the past 10 years.

**The Independent** and **The Daily Mail** are the exclusive sponsors of the National Spelling Bee for South Carolina.

Awarded Editor & Publisher Blue Ribbon for writing and publishing the best advertisement in the

United States in 1941.

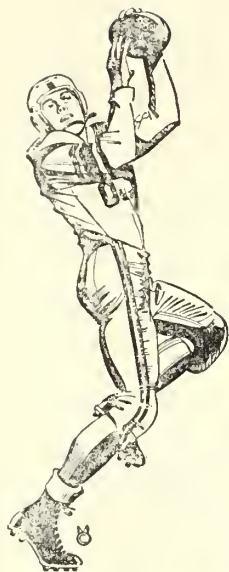
**The Daily Mail** was awarded the N. E. A. Bronze Plaque for having produced the largest newspaper ever printed in South Carolina (304 pages) .

In 1950, the National Editorial Association awarded **The Independent** its Distinguished Service Bronze Plaque for outstanding Farm pages. (In top three of U. S. A.)

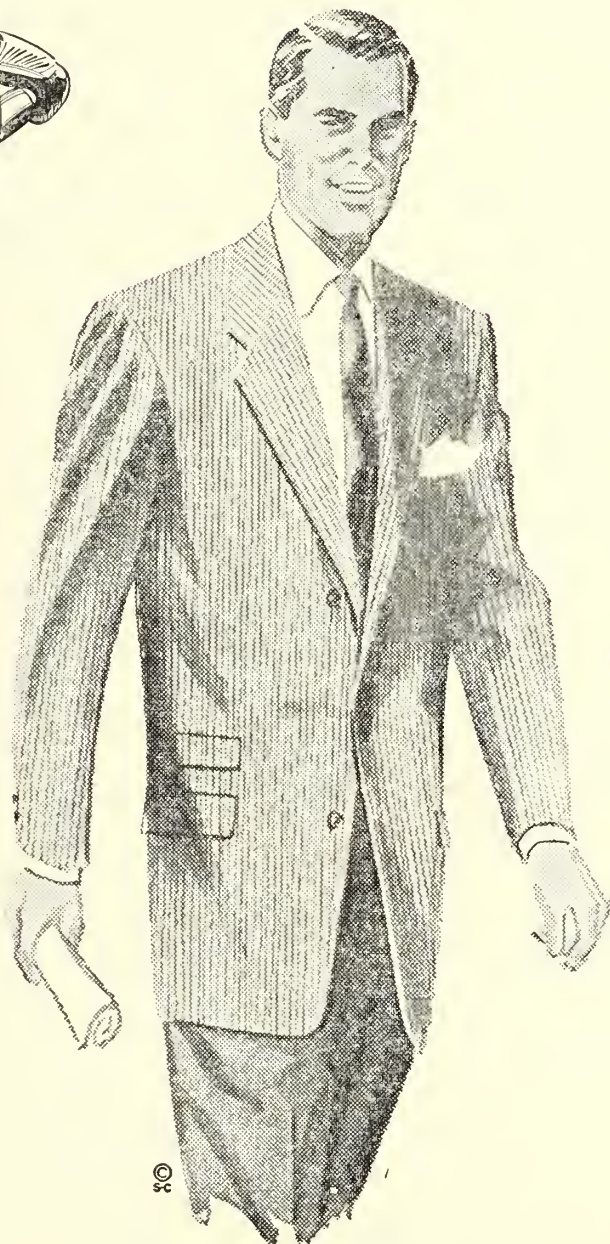
Holiday delivery service on RFD routes — another "First" for **The Independent**.

WILTON E. HALL  
PUBLISHER





BEST CATCH  
of  
1955 OR ANY YEAR!



MICHAELS-STERN SUITS

NUNN-BUSH SHOES

MANHATTAN SHIRTS

DOBBS HATS

McGREGOR SPORTSWEAR

SUPERBA TIES

INTERWOVEN SOCKS

HICKOK JEWELRY



All At

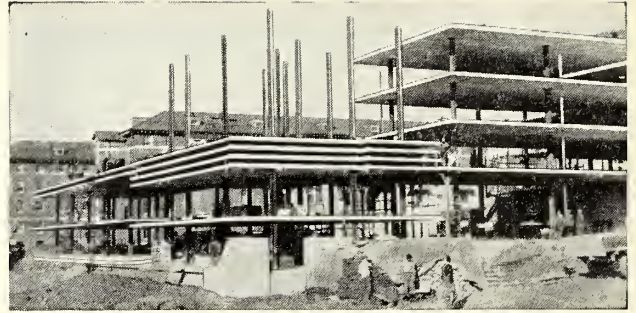
**BYERS  
MEN'S SHOP**

110 N. MAIN

ANDERSON

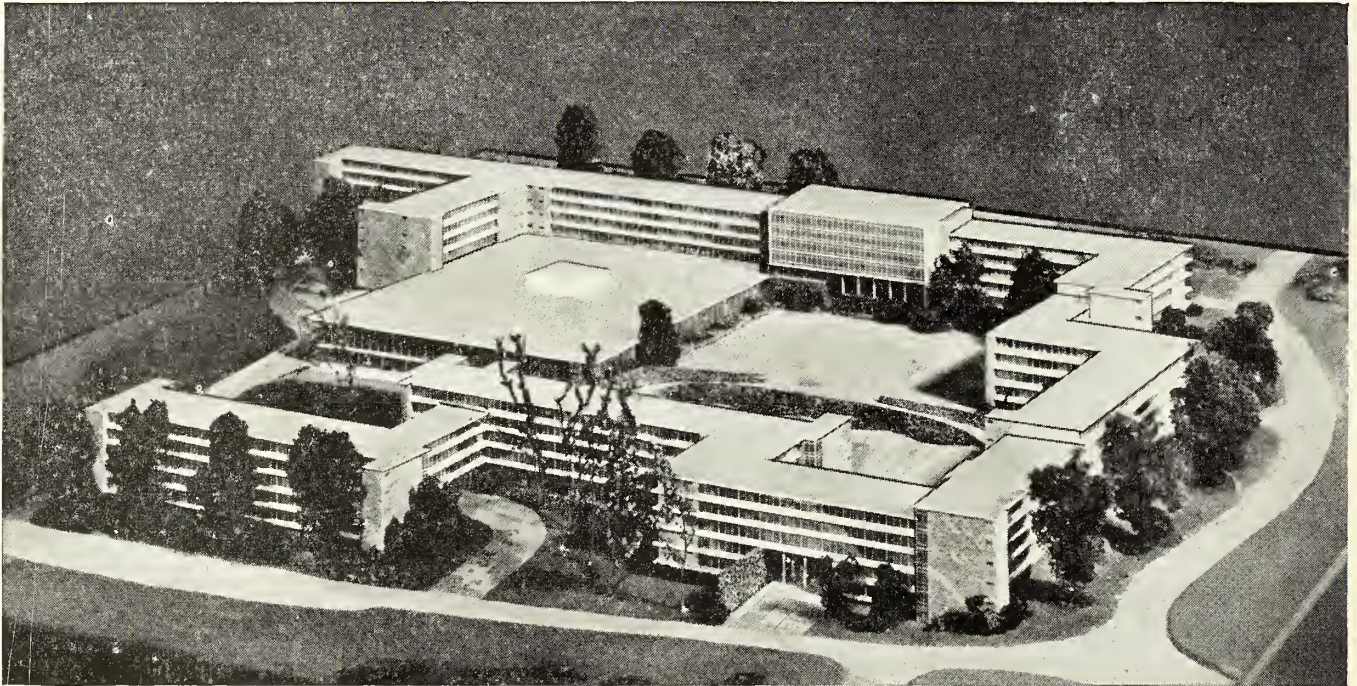
Make Sure the "NEW LOOK"  
Is the "BEST LOOK"  
at CLEMSON!!





**LIFT SLAB GOES TO COLLEGE  
TO BUILD FOR TEXTILE EDUCATION**

*In The South*



ARCHITECTS: LYLES, BISSETT, CARLISLE & WOLFF

A 520,000 square foot Student Dormitory built in record time at Clemson College, in South Carolina, is another part of the South's continuing program of building education and research facilities.

This revolution in building utilized the slabs for floors of the dormitory after lifting them to their appointed height. No framework of steel was needed — time and money were saved from the start. But more than a revolutionary building was constructed at Clemson—a growing center of textile education is making it more attractive than ever for firms in any branch of the textile industry to select the South for their home for profits both today and tomorrow.

*Builders in and of the South*

**DANIEL CONSTRUCTION COMPANY, INC.**  
GREENVILLE, SOUTH CAROLINA  
RICHMOND, VIRGINIA

**BIRMINGHAM, ALABAMA  
JACKSONVILLE, FLORIDA**







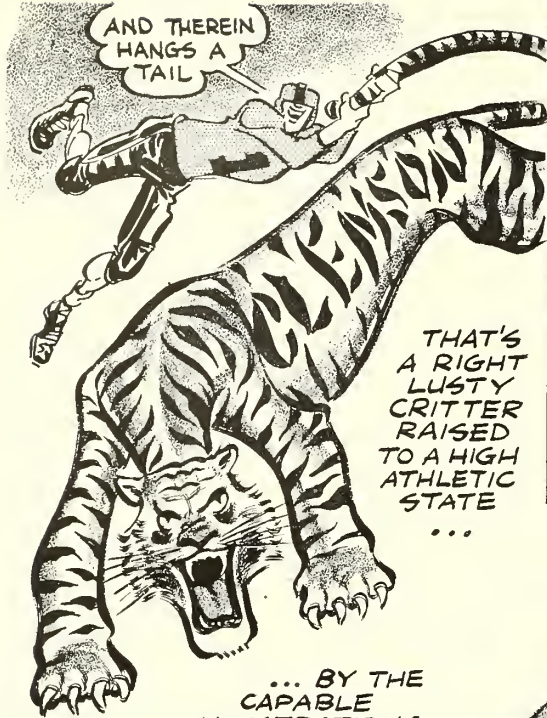
## WELCOME TO THE CLEMSON CAMPUS

It always gives me great pleasure to welcome visitors to the Clemson campus during football season. We at Clemson are proud of our football team and are happy to share its achievements with you.

*R.F. Poole*

President, Clemson College



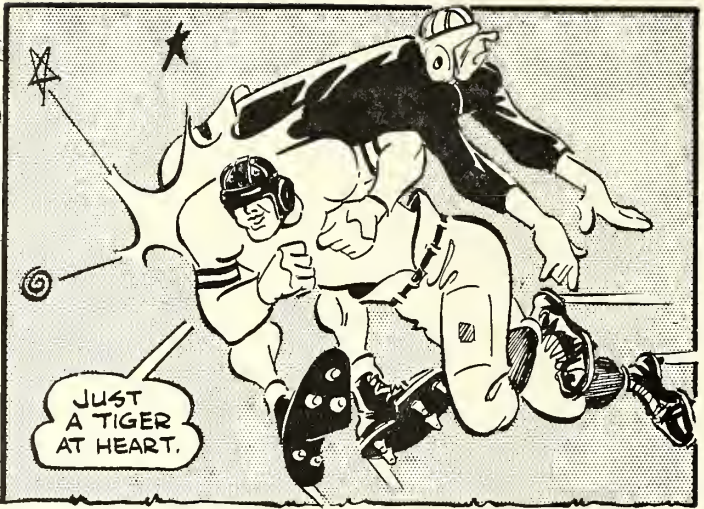


AND THEREIN HANGS A TAIL

THAT'S A RIGHT LUSTY CRITTER RAISED TO A HIGH ATHLETIC STATE

...

... BY THE CAPABLE MINISTRATIONS OF FRANK HOWARD...



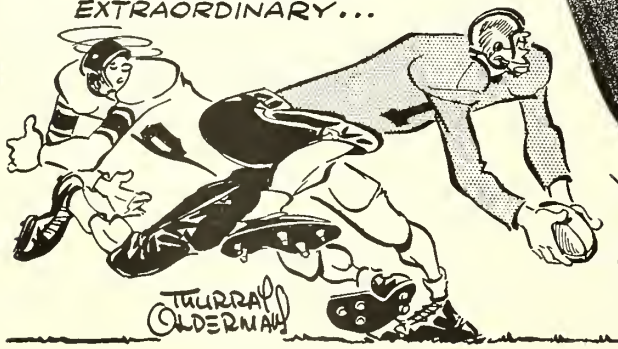
JUST A TIGER AT HEART.

HE CAME TO CLEMSON OUT OF ALABAMA AS A ROSE BOWL GUARD 25 YEARS AGO!



HE COMES FULLY QUIPPED

... SOUTHERN HUMORIST EXTRAORDINARY...



THURRAH OLDERMAN

HOW'S THIS FOR A CHANGE, COACH?

... AND FOOTBALL COACH PAR EXCELLENCE ... FLEXIBLE ENOUGH TO BECOME A SPLIT-T DISCIPLE AFTER 22 SINGLE WING SEASONS!



# *Frank Howard's Silver Anniversary . . .*

For obvious reasons, Frank Howard's hair hasn't turned to silver, but in 25 years time the Clemson football coach and athletic director has made a lasting impression in the realm of college football and relating athletics. His reputation as a Southern humorist is without equal, while his renown as a football tactician reached national scope in 1948 and 1950 when his teams went unbeaten and won bowl championships.

It was 25 years ago this fall that the young Howard, fresh from commencement at the University of Alabama, where he had played on an unbeaten Rose Bowl football team, first came to Clemson—line coach under Jess Neely. Nine years later, in 1940, after helping Coach Neely put the Tigers into the national limelight with a Cotton Bowl victory over Frank Leahy's undefeated Boston College team, an exuberant 30-year-old Howard took over the head athletic reins at Clemson when Neely headed to greener pastures at Rice.

His first team won the Southern Conference championship, his second was ranked among the nation's "top twenty" teams, and following only mediocre success during the war years and immediately afterwards, his 1948 and 1950 teams went undefeated to rank among the nation's "top ten" while his 1951 squad finished up in the "top twenty" though losing a Gator Bowl battle to Miami.

In addition to heading up the Clemson football program during a period which has seen the Tigers take a back seat to no one in the tough Atlantic Coast Conference, Howard has also had the job of directing Clemson's entire athletic program and at the same time raising all the required funds. Going into his 25th season at Clemson, he has never known the athletic department to wind up a sports year in the red.

A native Alabaman, with a thick drawl which helps his reputation as a "professional hill-billy," the Clemson coach was graduated from high school in Mobile before attending the University of Alabama.

## **PENDLETON OIL MILL**

**Pendleton, South Carolina**



**The Grass on Clemson's Football  
Field Was Fertilized With  
Pendleton Fertilizer**



**COMFORT**

**BEAUTY**

**ENTERTAINMENT**

## **CLEMSON THEATER**

**Clemson, South Carolina**

**Always The Best In Film Fare**





# A Clemson Monologue . . .

"So this is Clemson College, one-time plantation of John C. Calhoun! It's a beautiful school! The Blue Ridge mountains only a few miles in the distance add to the scenery as you said. Guess the nights are always cool, too, being in the foothills as you are.

"Everyone sure is friendly around here. They make a stranger feel right at home. Yes, I've decided to attend Clemson. It's always been one of my favorites, and now that I'm here I know I've made the right choice.

"No, I haven't made up my mind what to study, but then freshmen usually follow about the same general course. With 29 fields to choose from in the Schools of Arts and Sciences, Agriculture, Education, Engineering and Textiles, I don't see how I can go wrong in eventually finding the right one.

"Have I memorized the different courses? Why sure — agricultural economics, agricultural engineering, agronomy, animal husbandry, botany, dairying, entomology, horticulture, poultry, pre-forestry and pre-veterinary in the School of Agriculture; arts and sciences, education, industrial education and vocational agricultural education in the School of Education; architecture, ceramic engineering, chemical engineering, civil engineering, electrical engineering and mechanical engineering in the School of Engineering; and textile chemistry, textile engineering and textile manufacturing in the School of Textiles. Whew!

"There's always the possibility that I might stay in the Armed Forces upon graduation. They tell me that Clemson contributed more Army officers than West Point during World War II, and a lot of them stayed in and have high ranks today. Just because Clemson is no longer a strict military school is no reason to assume that Clemson won't still be turning out qualified leaders.

"You say the enrollment will be about 3,000 students this fall, and included in this number will be about 30 coeds? Guess it won't be long before the dormitories will be overflowing. I understand you can accommodate 1930 students in the new multi-million dollar dormitory completed last summer and 700 more in the older buildings.

"The buildings around here are beautiful. I really like that new Olin Hall where they teach ceramics and the new multi-million dollar Ag Center. They're both air-conditioned throughout. And the Clemson House! I've never seen a finer hotel.

"You're right about Clemson's being in a small college town, but I guess that's ideal. There's the academic atmosphere here. You certainly can't say you're in the 'sticks', because the Southern Railway stops here, U. S. Highways 123 and 76 pass through town and Eastern and Delta Airlines serve Clemson at Anderson—only 18 miles away—and Greenville—only 32 miles. Atlanta, Ga., and Charlotte, N. C., are less than three-hour drives.

"One thing I'm looking forward to at Clemson is the Concert Series which brings the world's finest entertainment here. This year I'll see the Marine Band, the Ballets Espagnols, Marie Powers in Gian-Carlo Menotti's 'The Medium', pianist Walter Geiseking, the Minneapolis Symphony and bass-baritone George London.

"The dances are fabulous here, too. All the big name bands get here sooner or later. There are plenty of activities I'm planning to participate in.

"Clemson is the South Carolina agricultural and engineering college and therefore not affiliated with any one religious denomination, you say? Churches on the campus are Baptist, Catholic, Episcopal, Lutheran, Methodist and Presbyterian, and there's plenty of attention given to students? Religious Emphasis Week is a high point of the year I understand.

"Clemson alumni are everywhere, and holding good jobs. Why, they tell me that Clemson men are right at the top or near it in practically every field of endeavor.

"Guess that's the big reason I'm coming to school here."



# CLEMSON COLLEGE ADMINISTRATORS . . .



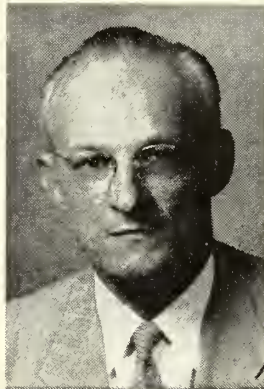
**DEAN WALTER COX**, Clemson '39, is in charge of all student activities on the campus . . . A regular guard on the 1939 Clemson Cotton Bowl Championship team, Dean Cox began his post graduate career as Clemson line coach and head baseball coach . . . He became Assistant to the President and Director of Public Relations and Alumni Affairs in 1951 and served in this capacity until recently.



**DR. F. M. KINARD**, Dean of the College, is in charge of all academic affairs on the campus . . . A graduate of Wofford, he came to Clemson as an instructor in English in 1924 . . . He was named Dean of Arts and Sciences School in 1943, a position he filled until his recent promotion . . . He received his Master's Degree at North Carolina in 1929 and was awarded a Litt.D. in 1944 by Wofford.



**MR. G. E. METZ**, administrative assistant to President Poole and secretary of the Trustees, was graduated from Clemson in 1927 . . . He received his M.A. degree from the University of North Carolina . . . He was appointed college registrar in 1935, a position he held until this past summer . . . At the outset of his Clemson career, he served as assistant registrar and mathematics instructor.



**MR. MELFORD A. WILSON**, Clemson's comptroller, coordinates the activities of the offices of the treasurer and business manager . . . Appointed to this new position in the summer, Mr. Wilson was formerly executive director of the S. C. Employment Security Commission . . . He's a graduate of U. S. C., having also done graduate work there in political science and public administration.

PHONE 2-2727

309 N. MAIN STREET

## *Rosamond's Goodyear Service*

Distributors for

Goodyear Tires

Lifeguard Shields

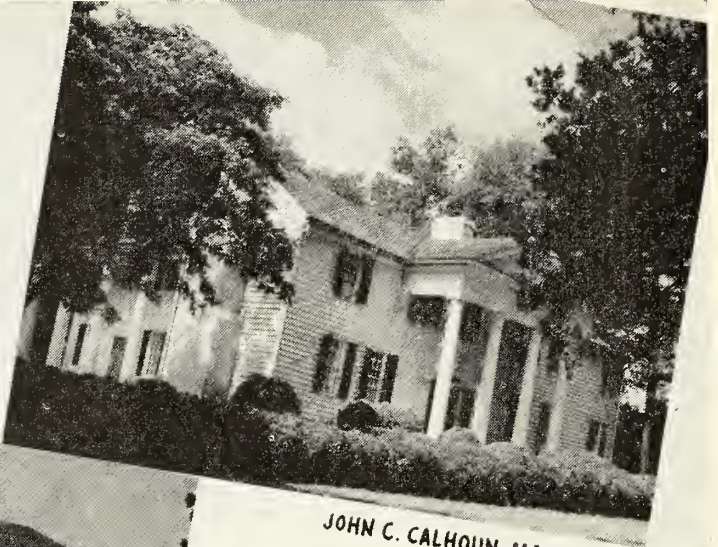
Batteries & Accessories

General Electric Appliances

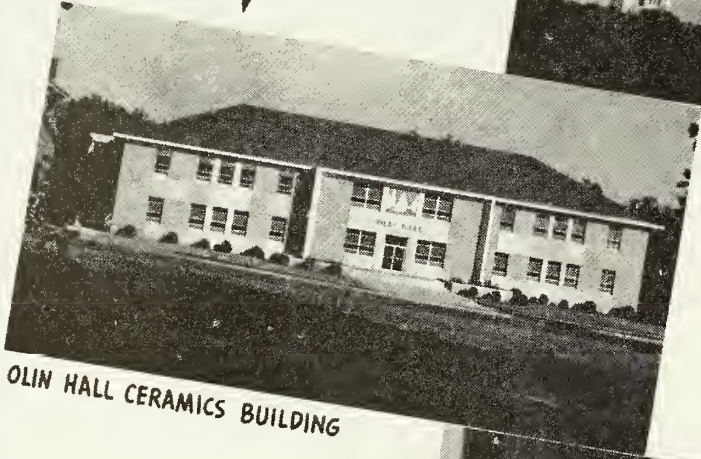
**GREENVILLE, SOUTH CAROLINA**



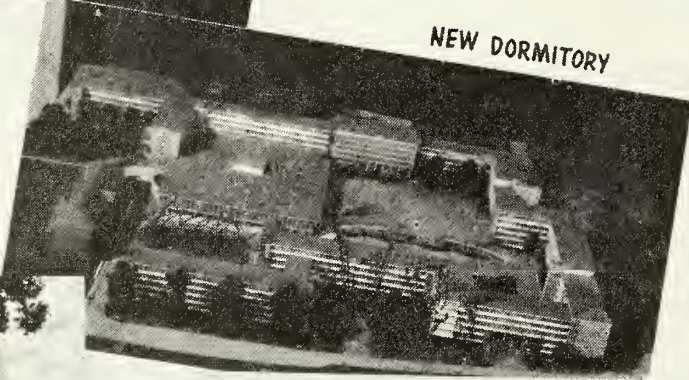
# The CLEMSON Campus



JOHN C. CALHOUN MANSION



OLIN HALL CERAMICS BUILDING



NEW DORMITORY



TILLMAN HALL



FIELD HOUSE

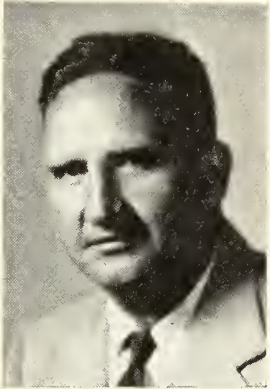




# ASSISTANT COACHES



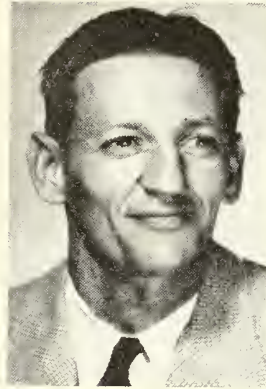
**BOB JONES**, Clemson '30, hasn't left the local college scene since graduation except to serve in the Army . . . His efforts as end coach have resulted in the Tigers having All-Conference ends four of the past five years — Glenn Smith, Dreher Gaskin and Scott Jackson . . . In the Army Reserve, he's a Brigadier General . . . His boxing teams of the late thirties won several Conference titles.



**BOB SMITH**, Furman '34, is the first man to take over full line responsibilities at Clemson since Frank Howard arrived on the campus 25 years ago . . . A versatile coach, he has directed four Tiger baseball teams, one to the Atlantic Coast Conference championship . . . He came to Clemson in 1950 as "T" coach for the scrubs . . . He was formerly head coach at Furman University.



# CLEMSON COLLEGE



**BANKS McFADDEN**, Clemson '40, is on the varsity staff after several seasons as head freshman coach . . . Also head basketball coach, he works doubly hard in the fall in readying for basketball while worrying about football . . . The greatest college athlete in Clemson history, he was first team All-American in both football and basketball and still holds three state records in track.



**CARL WISE**, King's College '37 . . . Former head coach at Washington and Lee, he specializes as backfield coach, a job he held at W&L, Pennsylvania, Bainbridge Navy and Hamilton (Canadian Professional League) before coming to Clemson . . . A fine student of the game with ability to express himself, he's charged with giving the Tiger offense more scoring punch.

## FRANK BALLENTINE

INCORPORATED



### Ford Sales & Service

Serving

CLEMSON

SENECA

"24-HOUR WRECKER SERVICE"

Phone Seneca 448

Seneca, S.C.

Farmall Tractors

International Motor Trucks

International Harvester Refrigeration

McDaniel Implement Co.

LIBERTY, S. C.

Be Satisfied With Only The Best

EAT AT

Sam's Luncheonette

AND

Sam's Drive Inn

Anderson, S. C.

Belton Hwy.



## "It Is A Pleasure To Do Business With You . . ."

The above is quoted from a letter we recently received from a Clemson grad now in the Service of his Country. It was our privilege to supply him with his uniform outfit. His complimentary statement is typical of the expressions of good will we have received in letters from scores of Clemson grads—and, of course, nothing gives us more downright satisfaction than being able to truly please our customers. We value good will more than profit—important as the latter is.

When the members of this year's graduating class were Freshmen, they wore cadet uniforms made by our company. It has been our great privilege to be the Official Uniform Supplier of Clemson College for six consecutive years. It is natural, therefore, that so many of those graduating and receiving Commissions should come to us for their uniform needs as soon-to-be Commissioned Officers. These Clemson grads like us for the fine fit and workmanship of our uniforms, our prompt service, and our down-to-earth, low prices which make it possible for them to buy all that they need, well within the uniform allowance they will receive. And they also like the fact that they do not have to pay us for their uniforms until they receive their allowance, whatever date that might be.

We sincerely hope it will continue to be our privilege to fill the uniform needs of this and future graduating classes.

# **IRVING L. WILSON CO.**

NO. 1 HIGHLAND AVENUE

**BALA-CYNWYD, PA.**



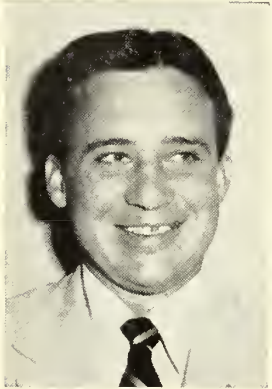
## ASSISTANT COACHES . . .



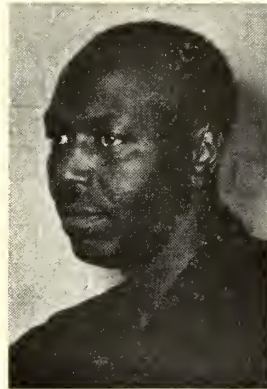
**COVINGTON (Goat) McMILLAN**, Clemson '30, returned to Clemson as backfield coach in 1937 after first serving as head coach at Griffin (Ga.) High and as an assistant at Furman . . . Today he is head freshman coach . . . An All-South tailback at Clemson, he's coached some of the school's finest backs since arriving on the campus—Banks McFadden, Bobby Gage, Ray Mathews, Fred Cone, etc.



**A. W. (Rock) NORMAN**, Roanoke '15, came to Clemson in the late 1930's after first serving as head basketball and track coach at Furman, South Carolina and The Citadel . . . One of the state of Virginia's great natural athletes in history, Rock is still active today . . . Cross country and head track coach, he was varsity basketball coach before Banks McFadden took over.



**DON WADE**, Clemson '52, returned to Clemson after one year of coaching at Waynesboro, Ga. . . Was first string linebacker on Orange and Gator Bowl teams . . . In addition to coaching the freshman line, Wade does a lot of talent scouting at Clemson . . . In the spring he stays busy as freshman baseball coach.



**HERMAN McGEE** began getting experience as a small colored boy many years ago under the watchful eyes of the late "Chappie" . . . Has been in charge of the training room since the 1949 season . . . Also keeps up with all the football equipment in working with the team managers . . . Is a favorite of the athletes.

### CLEMSON'S FOOTBALL TEAM

AND

### CLEMSON'S TEXTILE SCHOOL

ARE RATED AT THE TOP BY

# Amerotron Corporation

PLANTS IN

NORTH CAROLINA, SOUTH CAROLINA, AND GEORGIA



J. E. SIRRINE COMPANY

*Engineers*

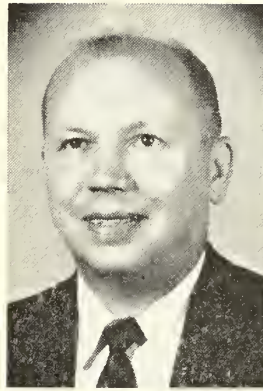
GREENVILLE, SOUTH CAROLINA



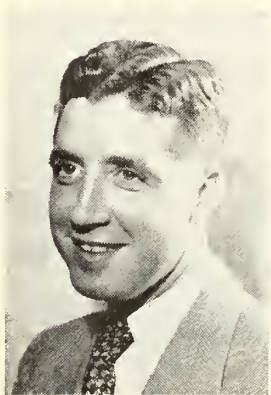
# ATHLETIC STAFF PERSONNEL . . .



**R. R. (RED) RITCHIE**, Iowa State '26, like Frank Howard, came to Clemson upon graduation from college and has been here ever since . . . Teaches in the Animal Husbandry Department . . . Received his Master's degree from Iowa State in 1938 . . . Has been a booster of Clemson's athletic program from the beginning . . . Took over job as faculty chairman of athletics the first of this year.



**GENE WILLIMON**, Clemson '33, came to Clemson as director of the IPTAY (I Pay Ten A Year) athletic booster club in 1950. He's become general business manager of the Athletic Association since . . . An outstanding Clemson half-back in the early 1930's, Willimon was in the insurance business before returning to his alma mater . . . Did yeoman work for successful '55 IPTAY drive.



**BRENT BREEDIN**, Washington and Lee '47, took over the Clemson sports publicity job during the 1952 football season . . . A former reporter in Corpus Christi, Texas, and sports editor of the Anderson Daily Mail, Breedin has served on the executive committee of the Southern Sports-writers Association . . . He heads up the Clemson Football Network which was started last year.



**EARLE MARTIN**, an alumnus of Clemson, has been working for the Athletic Department at many jobs for the past seven years . . . Known to virtually everyone as "Pear Baby" or "Pepper", he's in his second year as manager of the ticket office. Also supervises book and supply room for athletes on scholarships and assists the athletic staff in numerous ways.

The Products of . . .  
**AMERICAN BAKERIES**  
 Are Unequaled



Bakers of Delicious, Wholesome

**MERITA**  
 Bread and Cakes



**AMERICAN BAKERIES COMPANY**  
 ANDERSON, SOUTH CAROLINA

## CENTRAL ROLLER MILL

Manufacturers of

**ISAQUEENA FLOUR & CORN MEAL**  
 CUSTOM GRINDING      POULTRY FEED  
 AND MIXING              DAIRY FEED  
 MOLASSES                  HOG FEED

**CENTRAL, S. C.**

## T & D TRIM SHOP

"We Cover Any Ole Thing"

**AUTO TOPS      TAILORED SEAT COVERS**  
**ANTIQUES          FURNITURE**

**RALPH TIDWELL & C. D. DAVIS**

Phone 619

Seneca, S. C.



**ANTHON FOY**  
Sports Editor

# GREENVILLE PIEDMONT

Today's News Today



**JAMES B. ANDERSON**  
Sports Editor



South Carolina's Leading Newspaper

**The Greenville News**



# CLEMSON-GEORGIA RIVALRY IS ONE OF OLDEST

The Clemson-Georgia rivalry, fifth oldest in Clemson football history, finds the two nearby schools playing on Clemson turf for the first time in 23 years — last meeting was in 1932. Dating back to 1897, the second year that Clemson fielded a football team and only the sixth for a much older University of Georgia, the competition between the two colleges shows the Georgians out in front by a healthy 20-8-1 margin. In today's contest, the Tigers will be seeking their first victory over the invading Bulldogs in over 40 years. Clemson has lost 13 times since last winning 35-13 in 1914.

## IT'S A "NATURAL"

Today's game is the so-called "natural" for many reasons. Both teams rate about even after having been picked as the darkhorse candidates of their respective conferences — Georgia in the Southeastern and Clemson in the Atlantic Coast. The Bulldogs dropped their opener to strong University of Mississippi after leading at halftime, but they came back strong against Vanderbilt last week to win, 14-13, with a second half rally. Clemson hasn't met such strong opposition yet, but the Tigers showed spurts of brilliance in beating Presbyterian, 33-0, and Virginia, 20-7. The prognosticators who rate the contest a toss-up are probably right.

Coaches Wally Butts and Frank Howard are the "deans" of their respective conference coaches in actual number of active years coaching at Georgia and Clemson respectively. Butts is in his 17th consecutive year as head man at Georgia, during which time he has experienced only three losing seasons while winning four bowl championships — Rose, Sugar, Orange and Oil, tying for one — Gator, and participating in two as a loser — Orange and Presidential. His 1956 team went undefeated and untied. Howard is in his 16th consecutive year as head man at Clemson, during which time his teams have won Orange and Gator Bowl titles and participated in the Gator Bowl once as a loser. His 1948 and 1950 teams went unbeaten to finish among the nation's "top ten" and his 1941 and 1951 teams ranked in the "top twenty."

## CLEMSON'S GEORGIANS EAGER

The Georgians on the Clemson squad are particularly anxious for a win, so, as they put it, "we can go home during the holidays." Three seniors members of the Tiger starting eleven are fullback Bill O'Dell of Newnan, alternate captain and center Wingo Avery of Newnan and right end Joe Bowen of Villa Rica. On the second eleven, left halfback Lem McLendon hails from Albany and left guard Buck Priester is a native of LaGrange. And on the third eleven are right tackle Jack Bush of Atlanta and right halfback Frank Griffith of Elberton.

Its being "Dad's Day" for the Clemson football fathers is another good reason why the Georgia boys on the Tiger team are eager to show up well. Lem McLendon, for example, points out that his father is driving up from Albany with five Georgia rooters.

On the other hand, Georgia halfback Jimmy Orr, one of the Bulldogs' outstanding players in the first two games, hails from nearby Seneca, S. C., and is quite anxious to look good before the home folks.

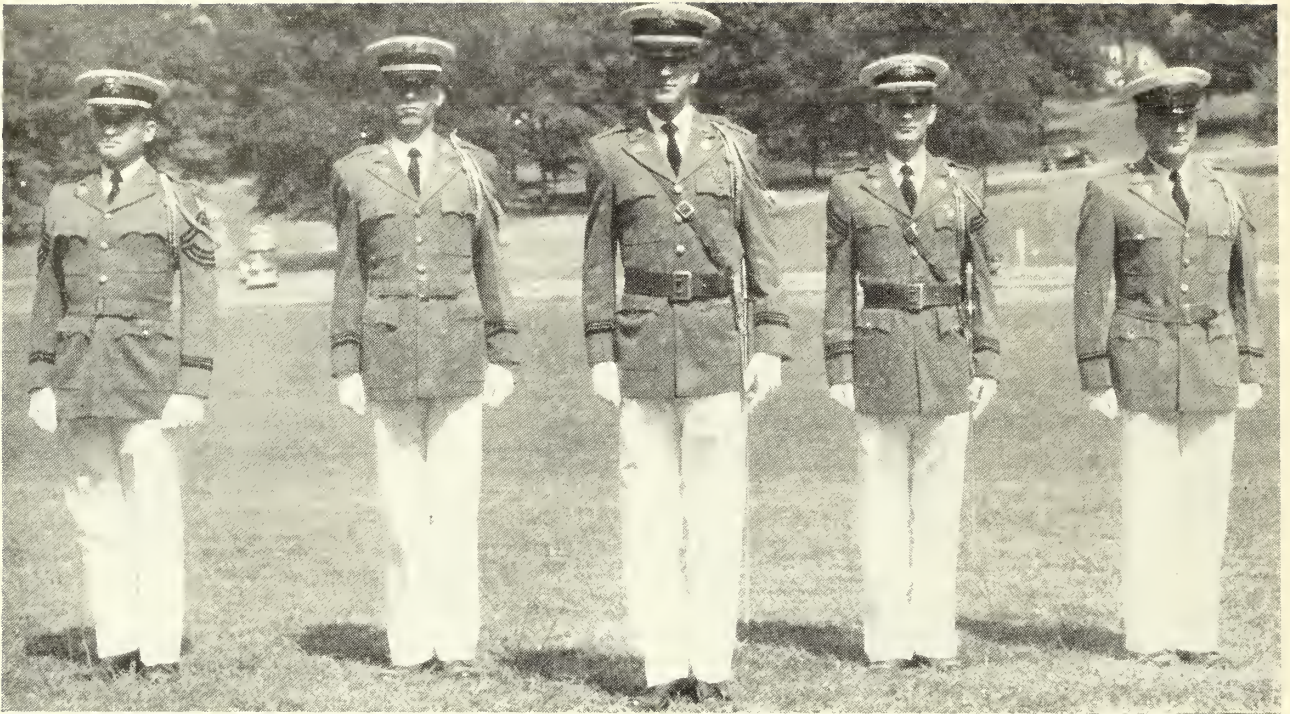
## AERIAL ASSAULTS FORESEEN

Both Clemson and Georgia have veteran personnel at most positions and are rated strong up front. Clemson, using a running game against Presbyterian and Virginia, is expected to open up with a passing attack against the Bulldogs, while Georgia, always tough in the air, is expected to reciprocate.

Jimmy Harper, Georgia's senior quarterback regular, was the key man in his team's 14-7 win over Clemson this time last year. Now, many Bulldog fans will insist that Dick Young, also a letterman last fall, is even better. It was Young who sparked his team's two-touchdown drive against Vanderbilt last weekend.

Clemson, forced to play without passing master Don King last fall, gained only 32 yards through the air. Don, whose quarterbacking was a big feature of Clemson's win over Virginia last week, is expected to lead the Tigers' aerial assault this afternoon, supplemented by Charlie Bussey, who received his varsity baptismal last year against the Bulldogs.





**TIGER BAND OFFICERS**—Left to Right: Stanley Johnson, Billie Alford, Joseph Tisdale, Jerry Holcombe and Fred Reinhold.



**R. E. Lovett, Director of Bands**

## The Clemson College "Tiger" Band

Robert E. Lovett — director

### STAFF

Major Robert J. Tisdale — Band Commander

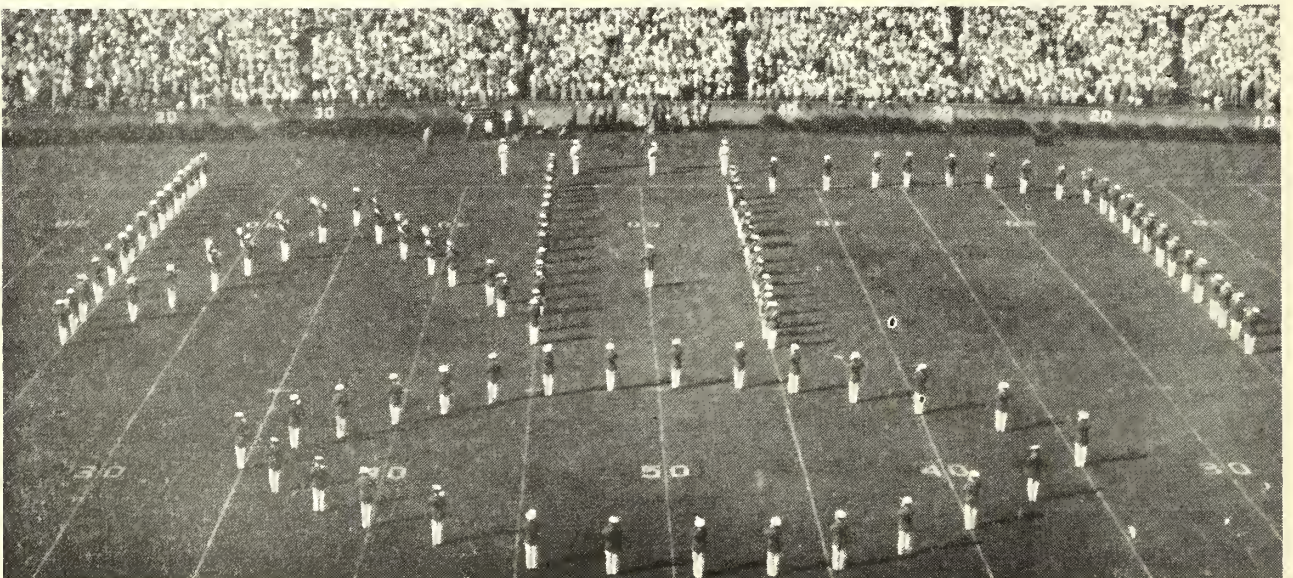
Lieutenant Jerry V. Holcombe — Executive Office

Lieutenant Stanley T. Johnson — Bandmaster — Student

Lieutenant William L. Alford — Drum Major

Sergeant Major — Frederick W. Reinhold

Captain, Color Guard — Emery Bishop



**SALUTE TO UNIVERSITY OF MARYLAND**





**CHEER LEADERS**—Left to Right: Powers McElveen, Fletcher Smoak, Les McCraw, Jimmy Jones, Jimmy Humphries, John Duffie, Eddie Andrews, Head Cheer Leader, Dickie Flowers and Orlando Perez.

## CLEMSON vs U. of GEORGIA (Dads' Day)

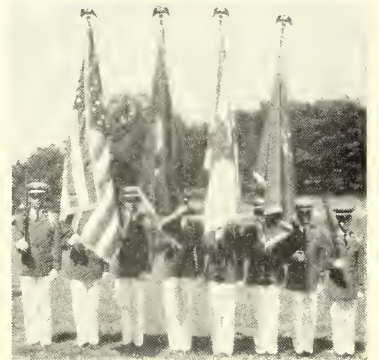
### PROGRAM — PRE-GAME

Salute to the Dads                      Clock Formation                      USA Formation  
 Prayer — Student Chaplain                      National Anthem

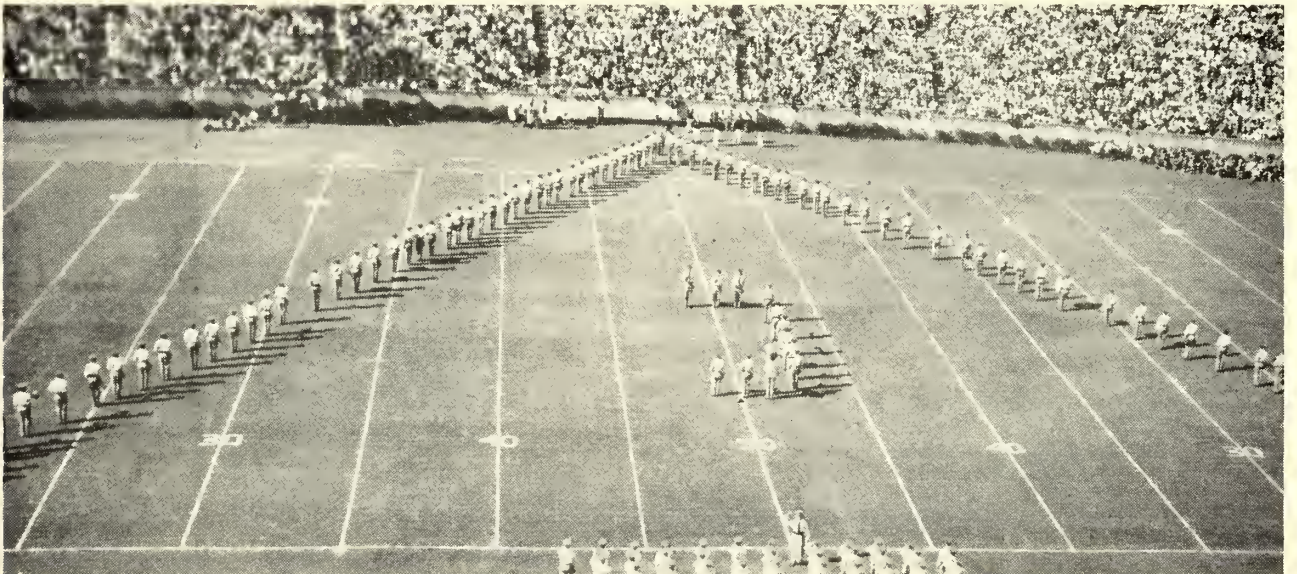


### PROGRAM — HALF-TIME

Salute to University of Georgia  
 Precision Drill                      CAC Formation                      Clemson Alma Mater



**Tiger Band Color Guard**



**SALUATE TO VILLANOVA**





## JAMES WALLACE BUTTS

Athletic Director and Georgia Football Coach

The 1955 football season marks the 17th year James Wallace Butts has been at the helm of the Georgia Bulldogs. Now dean of Southeastern Conference head coaches and recently named to the N.C.A.A. Rules Committee from District Three (comprising the Atlantic Coast, Southern and Southeastern Conferences), 'tis no wonder Georgians rank him with two other athletic immortals born and bred in the Empire State of the South: Ty Cobb and Bobby Jones.

He became head coach at the nation's oldest state chartered institution of learning in 1939 and his 16-year record with the Bulldogs shows 110 victories against 56 losses and eight ties (including seven bowl games), for an amazing winning percentage of .663, and almost two-thirds of these games were on the road! His 1942, 1946 and 1948 teams were S.E.C. Champions.

Butts was a member of the college all-stars coaching staff four times (1943-46-47-48) and the all-stars beat the pro champions three of these years, and lost only in 1948 to the world champion Chicago Cardinals who were led by Butts famous protege, Charley Trippi.

## LAUGHRIDGE'S

Anderson's Finest

MEN'S WEAR



HART SCHAFFNER and MARX  
CLOTHES

LEE and STETSON HATS

FREEMAN SHOES

VAN HEUSEN SHIRTS



N. Main At Earle Streets

TWO GOOD WAYS TO SAVE!

1. IN PERSON . . . 2. BY MAIL

We always enjoy a friendly visit with the customer-friends who have their savings accounts here. But, if you live at a distance, you'll like the convenience of mail saving, and you'll like the time it saves, too.

FIRST FEDERAL SAVINGS & LOAN ASSN.

107 North Main St.

Anderson, S. C.

ASSETS OVER \$14,000,000.00

MILK

ICE CREAM

FARMER

OWNED



Anderson, S. C.

CAAnal 5-5491





UNIVERSITY OF GEORGIA LIBRARY

COMPLIMENTS OF  
**CENTRAL  
CONCRETE & PLASTER  
COMPANY**

READY MIX CONCRETE  
PLASTERING CONTRACTS  
BUILDING MATERIALS



**Central, South Carolina**

**ALUMINUM AWNINGS**  
Baked on Enamel  
Ventilated — Average Window \$18.85

**GLASS JALOUSIES**  
All Weatherstripped  
Doors \$35.00 — Windows \$21.00

**IRON RAILINGS**  
Ornamental Columns — Clothes Posts

**VENETIAN BLINDS**  
Any Size — Any Color

**TRACO PRODUCTS CO.**  
Old Williamson Road Phone CA 6-1492

**RALPH HAYES MOTORS**

“AFTER WE SELL, WE SERVE”

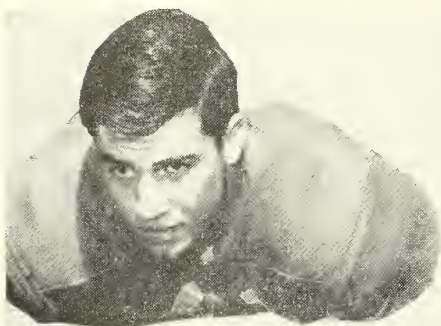
907 N. Main St. Telephone CAnal 6-1571

**ANDERSON, SOUTH CAROLINA**

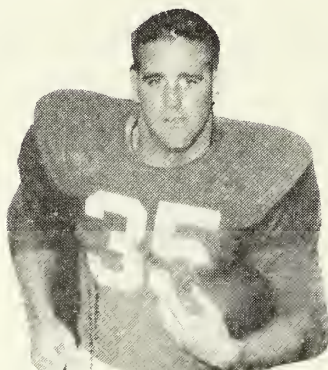
**LINCOLN - MERCURY SALES & SERVICE**



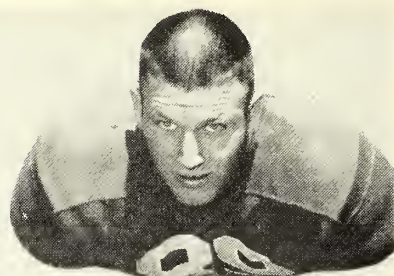
# UNIVERSITY OF GEORGIA PLAYERS



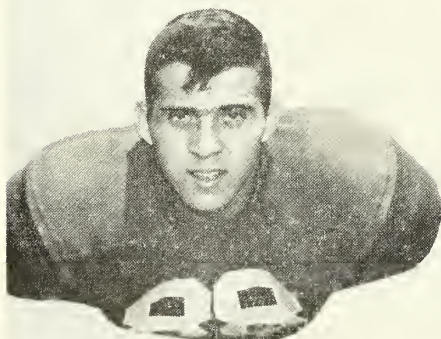
WAYNE DYE  
GUARD



KNOX CULPEPPER  
FULLBACK



WALTER WHITE  
TACKLE



ANGELO MONTI  
END



TONY CUSHENBERRY  
GUARD



CLEVE CLARK  
END



DICK YOUNG  
QUARTERBACK



JIMMY BROWN  
CENTER



JIMMY ORR  
HALFBACK



JOHN LUCK  
TACKLE



WENDELL TARLETON  
HALFBACK



# UNIVERSITY OF GEORGIA

The University of Georgia received its charter from the General Assembly of the State of Georgia in 1785, the first charter to a state university. Abraham Baldwin, a graduate of Yale, was its first president. Classes opened in 1801.

It remained for Josiah Meigs, successor to Baldwin as president, to direct construction of the institution's first buildings on the present campus in Athens, then a virtual wilderness. From less than 30 students at the beginning, the University has grown to its present enrollment of more than 5,000 students per year.

Among Georgia's famous graduates have been such men as Henry W. Grady, orator and journalist; Crawford W. Long, discoverer of anaesthetic properties of ether; Charles H. Herty, who developed the Southern pine paper industry; Alexander H. Stephens, vice-president of the Confederacy; George F. Pierce, great Methodist bishop; John and Joseph LeConte, renowned scientists; Senator Richard B. Russell; Howell Cobb, Benjamin H. Hill and John B. Gordon, all eminent military and civic leaders of Georgia.

Dr. O. C. Aderhold, a graduate of the University in 1923 and formerly head of the College of Education, in 1950 became president of the University.

Graduate and undergraduate programs of instruction are offered in the following schools and colleges of the University: Arts and Sciences, Law, Pharmacy, Agriculture, Forestry, Education, Business Administration, Journalism, Home Economics, Veterinary Medicine, and Graduate School.

## CLEMSON CAFETERIA

SANDWICHES -- DINNERS

QUICK SERVICE

REASONABLE RATES

LOCATED IN BASEMENT OF YMCA

Bob & LaTrelle Lisenby  
UNDER NEW MANAGEMENT

Follow The Tigers Away From Home

via One of Our Flexible Busses

## WELBORN BUS LINES

"WE SPECIALIZE IN CHARTERS"

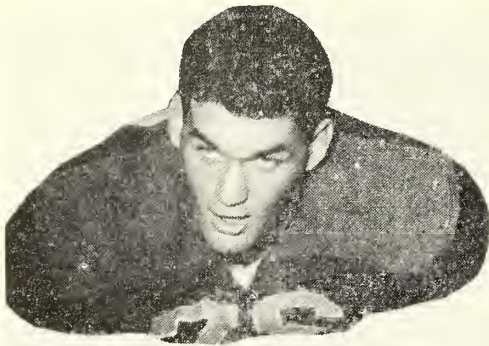
LIBERTY, S. C.

Phone 3722



"Now, during this play, that snappy looking majorette struts out on the field!"

# UNIVERSITY OF GEORGIA PLAYERS



JERRY GRIFFIN  
TACKLE



JIMMY HARPER  
QUARTERBACK



DUD MOSTELLER  
TACKLE



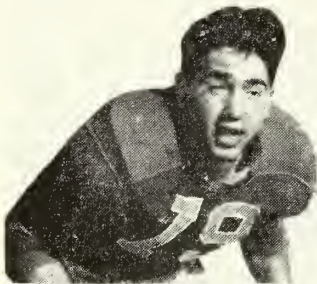
BILL SAYE  
CENTER



DON SHEA  
GUARD



BOBBY GERRARD  
FULLBACK  
CAPTAIN



LEN SPADAFINO  
GUARD



CONRAD MANISERA  
HALFBACK



ROY WILKINS  
END



CHARLES HARRIS  
HALFBACK



LANEAIR ROBERTS  
END





CLEMSON ALTERNATE CAPTAIN WINGO AVERY



CLEMSON CAPTAIN DON KING

## STONE BROTHERS

Complete Outfitters to



Men, Young Men, and Students  
108 North Main Street



GREENVILLE, SOUTH CAROLINA

## Clemson DeLuxe Motel

CLEMSON, SOUTH CAROLINA

16 MODERN UNITS

PRIVATE BATHS -:- TELEVISION IN LOBBY  
YEAR-ROUND AIR CONDITIONED

Located 2 miles east of Clemson — U.S. Hwy. 123  
Direct route between Greenville and Atlanta

P. O. Box 66, Ph. 6744      W. B. Hamm, Manager

## MAXWELL BROS. & McCALLUM

"Anderson's Leading Furniture Store"

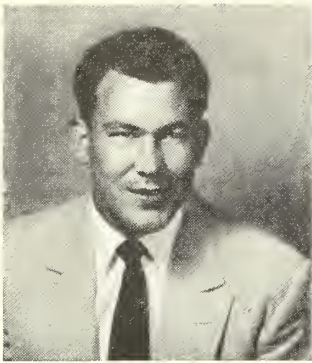
138 N. Main St.      Phone CA 5-5466  
ANDERSON, SOUTH CAROLINA

Donuts Are Best When You Buy  
Them at the

## CAROLINA CREME DONUT SHOP

309 Greenville St.      Anderson, S. C.





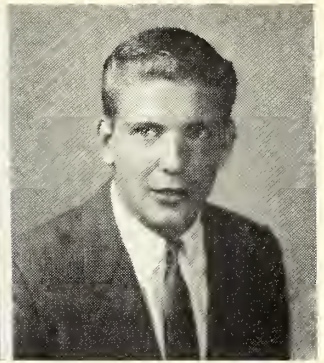
**John Grdijan** is the only sophomore slated to play on the first eleven. He stood out as a 24-year-old ex-G.I. freshman guard last fall. He played ball in Germany.



**Don King** has been Clemson's leading ground-gainer for three straight years. Highest honor to come to the Tiger quarterback was the 1954 "Swede" Nelson Award for Sportsmanship.

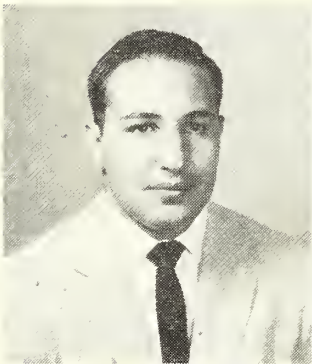


**Wingo Avery** is in his 5th year at Clemson. He'll be graduated with education major in February. Team alternate captain, he's rated the equal of any center in the Atlantic Coast Conference.

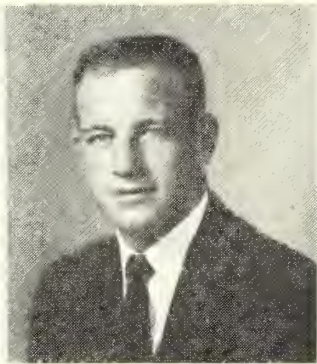


**Joel Wells** is Clemson's regular left halfback and today is rated as "best back in the Conference" by his coaches. He's a tremendous defensive player and a hard runner.

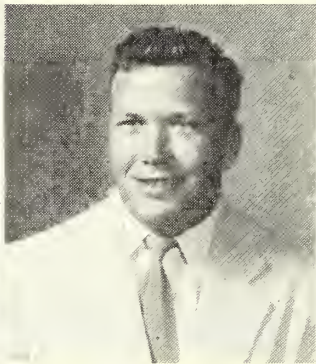
## CLEMSON PLAYERS



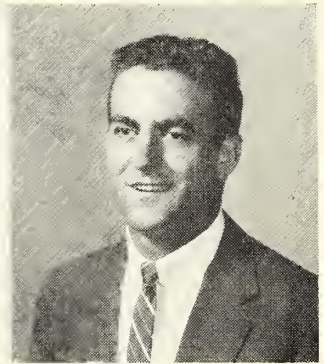
**Dick DeSimone** was the only 1954 sophomore to start every game. He's a tremendous linebacker from his right guard position. Had his knee operated on in mid-July. Hopes to be ready for most of season.



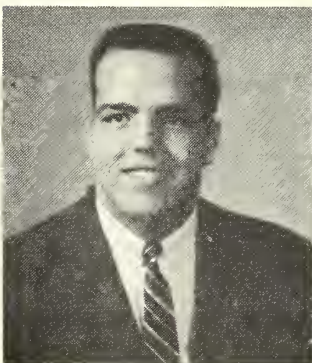
**Walt Laraway** will probably be Clemson's leading pass receiver this fall. Must fill gap left by All-Conference graduates of 1953 and 1954 seasons, Dreher Gaskin and Scott Jackson. Will graduate in February.



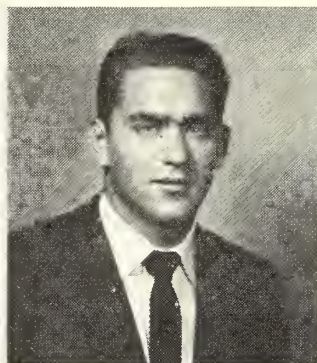
**Willie Smith** is the strong silent type at right end. He played second string ball as a consistent sophomore last fall. Is looking for more improved season this time. Runs dashes on track team.



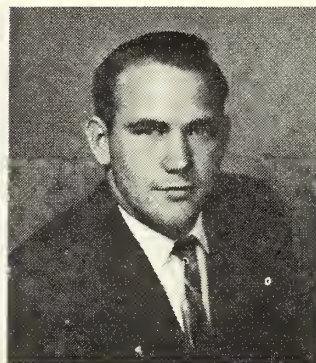
**Dick Marazza** was the sensation of spring drills with his downfield blocking from tackle. Always strong defensively, he's the blocking leader on offense now. Candidate for Jacobs Blocking trophy.



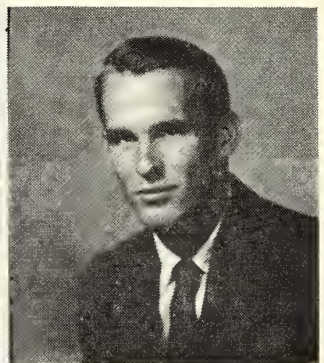
**B. C. Inabinet** is the giant of the squad. He's an excellent blocker in the line from his right tackle position. Outplayed Wake Forest's Bob Bartholomew last fall in his big game of year.



**Earl Greene** is one of the hardest tackling performers on the squad. Poor eyesight has handicapped him, but he now uses contact lenses. Better blocking and he'd be great.



**Bill O'Dell** has been on the varsity for four years straight. He averaged 5.5 yards per carry as a halfback in 1953. Last year he was leading ground-gainer in the Maryland and Auburn games at fullback.

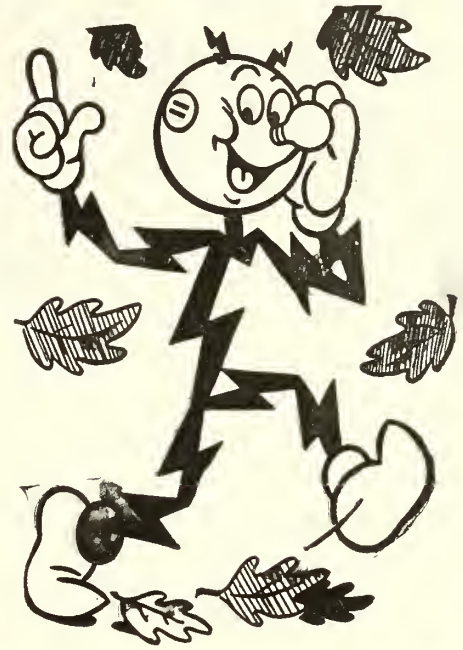


**Jim Coleman** led the Tigers in scoring last fall with five TDs and an extra point. He was one of the state's finest prep quarterbacks before coming to Clemson. Today he's a great pass-receiving halfback.



Compliments of  
**Belton Bottling Company**

Bottlers of  
**ORANGE CRUSH and NU GRAPE**  
Belton, South Carolina



**DUKE POWER COMPANY**  
*Serving the Piedmont Carolinas*

We want to be . . .

Your Headquarters in South Carolina  
for Office Machines, Equipment & Supplies

with 4 stores to serve you

- ANDERSON      ● GREENWOOD
- GREENVILLE      ● SPARTANBURG

**Harper Brothers**  
INC.

OFFICE MACHINES • EQUIPMENT • SUPPLIES

LUNCH

BREAKFAST 7 - 11 A. M.

DINNER

# The Shining Tower Restaurant

"ANDERSON'S FINEST IN EVERY RESPECT"

ONCE A CUSTOMER  
ALWAYS A CUSTOMER

- WESTERN STEAKS
- CHOPS, CHICKEN
- SEAFOOD
- HICKORY COOKED  
BARBECUE

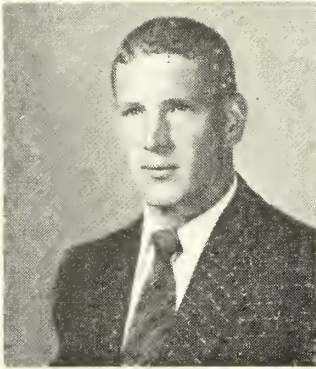
North Main St. Ext.

Telephone CAnal 4-1361

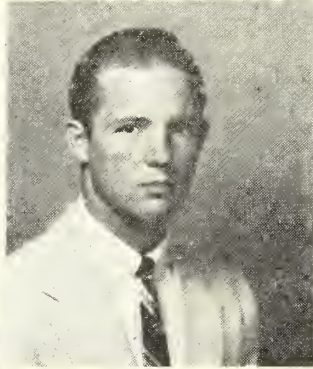
VIC WILSON, Owner

**Anderson, South Carolina**





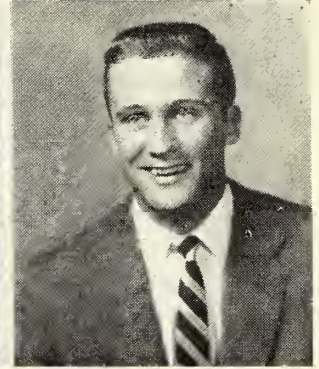
**Donnie Bunton** was a "bohunk" guard last fall but played first string center all spring with regular Avery on the sidelines. He's married and the father of a boy and a girl.



**Lem McLendon** played freshman ball at Clemson in 1950 but took three years off to serve in the army — two as a second lieutenant in Germany. Smallest halfback on the squad, he's one of the toughest.

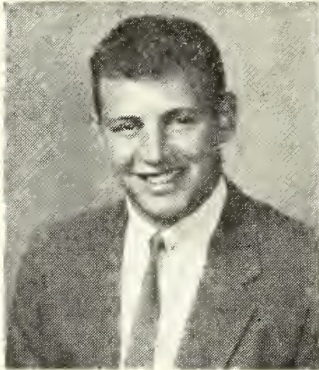


**Bill Thomas** was a third string freshman fullback last fall, a second string center in the spring and could conceivably be a first string guard before long. He's a tremendous competitor.



**Charlie Bussey** was runnerup as Clemson's "most valuable" as picked by the players last fall. A "B" student in the classroom, he's a fine leader on and off the field. An excellent quarterback.

## CLEMSON PLAYERS



**Joe Pagliei** was Clemson's regular right halfback most of last fall and half of 1953. Biggest back on the team, he led the A.C.C. in punting in 1954. Is a flashy performer.



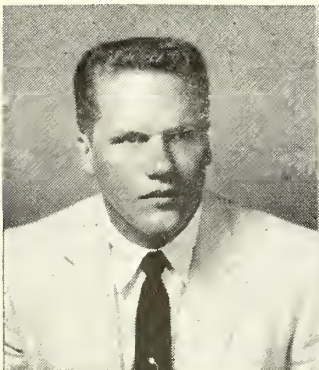
**Neuf Ankuta** is one of the most underrated players on the squad. Had 5.5-yard rushing average last fall. He's Brooklyn's contribution to the Tigers. Excellent blocker and defensive fullback.



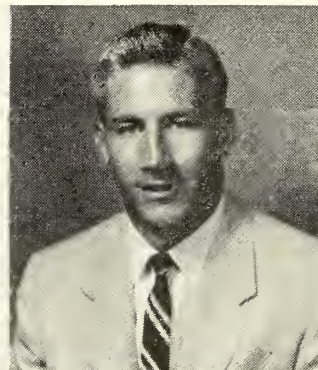
**Pete Wall** lettered as a second string performer at end in 1953. He could have been graduated in August but came back to play a final season. Football has been a big part of his life.



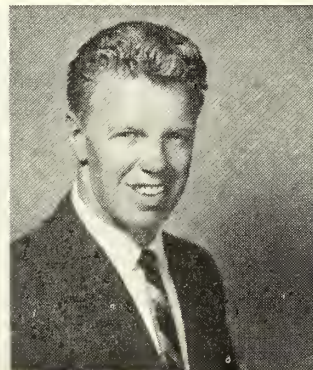
**Billy Hudson** is the third Hudson brother to earn a Block C letter at Clemson. Brother Bob is currently playing with the Philadelphia Eagles. Brother J. C. was graduated last year.



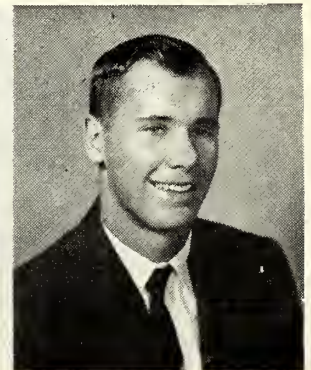
**Leon Kaltenbach** has been improving rapidly at the guard position after "bohunking" as a sophomore last fall. He played ball with Joe Pagliei at Clairton, Pa., High.



**Joe Bowen** came to Clemson minus an athletic scholarship but proved to be the best freshman end of 1952. He was the state hurdles champion last spring. He plans to be a Methodist minister.



**Tommy Sease**, the smallest, but possibly most aggressive, tackle on the team. His defensive play has been exceptional this fall in practice. He saw limited action last year.



**Jack Steinbrecher** was one of the South's most highly sought after prepsters last year. An All-American center at Barboursville, W. Va., High, he liked the military phase of Clemson.



Best Wishes

to the

Clemson Tigers

from the Anderson  
Headquarters of

Florsheim Men's Shoes



In ANDERSON — It's . . .

**WELBORN SHOES**

"Exclusive But Not Expensive"

## Michael's Restaurant

121 SOUTH MAIN STREET

Opposite Poinsett Hotel

**CHARCOAL BROILED STEAKS**

**SEA FOOD**

**KOSHER FOODS**

Phone 92207

Greenville, S. C.

## BALLENTINE SUPER MARKET

"The Home of Fine Food"

Grocery, Meat & Produce

Air-conditioned :- Ample Parking Space

Phone 5365

Clemson, S. C.

Smaller City Dealers with Lower Overhead

**SELL FOR LESS**



See Us Before You Buy . . . and . . .

**THERE'LL BE A FORD IN YOUR FUTURE**

**BE FIRST — GO**

# FORD

john foster

EASLEY, S. C.

"Easley's Only Authorized  
FORD Dealer"

Callaham-Liberty  
Motors., Inc.

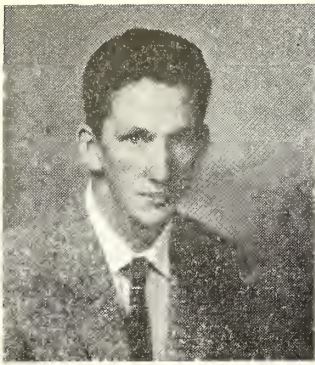
LIBERTY, S. C.

"Liberty's Only Authorized  
New Car Dealer"

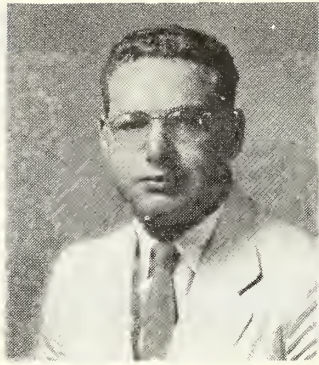


"Our service department rated FORD's finest in the Carolinas"





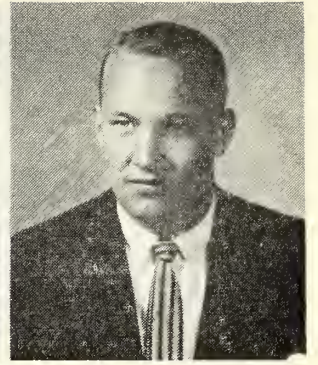
**Bill Few** came to Clemson as a halfback last fall but took over as a regular end when it became apparent that spot needed strengthening. He's perhaps best punter on the squad.



**Bob Spooner** was a sensation in spring practice after "bohunking" as full-back last fall. Had to work hard to pass analytical geometry exam in September to get eligible.

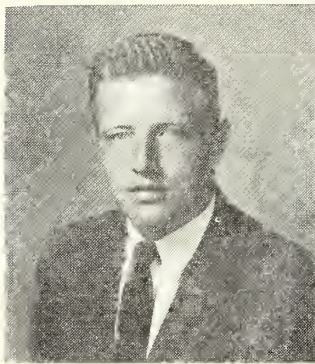


**Bill Barbary** is solid quarterback insurance behind the experienced King and Bussey. He's also fine basketball prospect, standing out on the strong Cub team last winter.

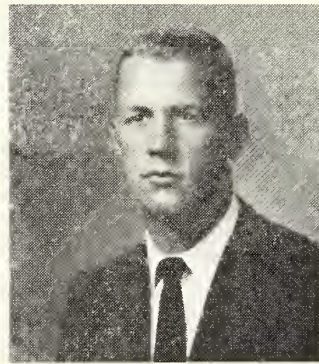


**Ronald (Whitey) Jordan** was noted for his offensive end play at Florence High but stood out on defense as a Cub last fall. Blocked punts against both Duke and Wake Forest Frosh.

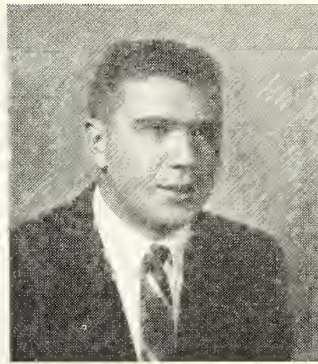
## CLEMSON PLAYERS



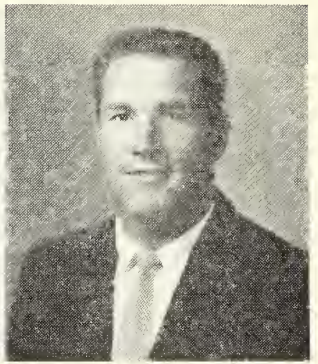
**Jim McCanless** is one of the biggest guards on the squad at 220 pounds. A native Tar Heel, he is quite promising. His kid brother is at South Carolina on an athletic scholarship.



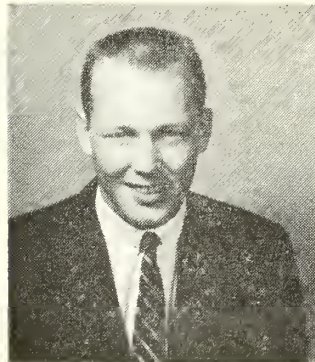
**Jack Bush** was a regular Cub tackle last fall and showed up well in spring drills. He also played freshman basketball. He is one reason Tigers' tackles are the toughest.



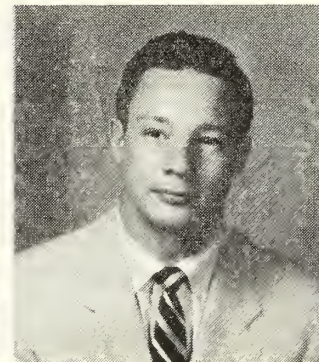
**Doug Thompson** of London, Ontario, Canada, has been the most fragile player on the Tiger squad through the years. He's had both ankles sprained, but when able, he shows up well.



**Hampton Hunter**, a two-letterman, should be solid insurance behind Wingo Avery at center. The 220-pound Central native gives it all he's got. He was married last spring.



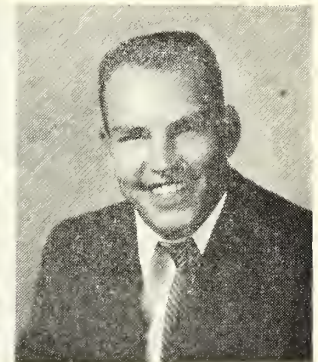
**Johnny Thomason** was regular Cub tackle last fall. Missed all of spring practice with an injured knee. Considered best young tackle prospect on team today. Attended Darlington School one year.



**Buck Priester** has played first and second string guard for two seasons. He'll be graduated in February with a major in education. Frank Howard coached his father during his first year at Clemson in 1931.



**Shot Rogers** is one of the best broken field runners on the Clemson team. This is his fourth year at Clemson. He had a fabulous record at Mullins High. Is one of the big chiefs at the dining hall.



**Frank Griffith** was one of the finest Cub backs Clemson ever had. He scored three touchdowns in the South Carolina freshman game of 1953. His wife is Frank Howard's secretary. He's a pre-dental student.



FOOTBALL                      BASKETBALL  
GOLF    BASEBALL    TENNIS

**BILL DILLARD'S**  
**Sporting Goods**

127 E. Whitner    P.O. Box 473    Phone 1887

ANDERSON, SOUTH CAROLINA



Archery    Fishing    Swimming  
Hunting    Sportswear

COMPLIMENTS OF

**Jax's and Joe & Jax's**  
**HOT SHOPPES**

North Main & South Main  
ANDERSON, S. C.

**Ballentine & McClellan**  
**Motors**

HOME OF  
**FACTORY FRESH AUTOMOBILES**

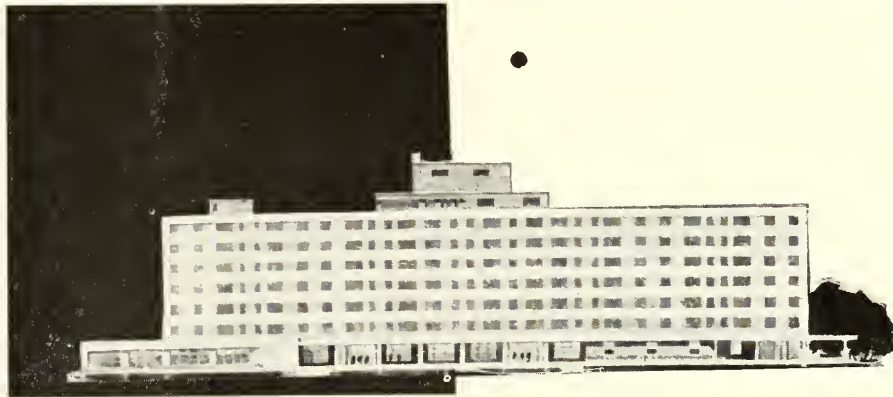
WHY PAY MORE? — WE SELL FOR LESS

1201 N. Main St.                      Phone 43476  
ANDERSON, S. C.

One of the best in the South . . . ultra-modern . . . says



After  
the Game  
Meet Your  
Friends  
in the  
TIGER  
TAVERN  
in the  
Lower  
Lobby



*Clemson*  
**House**



In the foothills of the beautiful Blue Ridge Mountains, you'll find the Clemson House located in a unique setting — right on the campus of Clemson College. Here you will find all of the services of a great metropolitan hotel yet you will be far away from the noise of a large city. And you'll enjoy the beautifully landscaped grounds and the flower beds. The splendid accommodations and the excellent cuisine offered at the Clemson House are combined with warm friendly hospitality and fine service. The Clemson House is a gem among fine hotels, and the rates are almost unbelievably low. All rooms are air conditioned. Four dining rooms and the Tiger Lounge and Coffee Shop. There is swimming, fishing and golf nearby

FRED L. ZINK, JR., Manager

On East Edge of Clemson, S. C., on U.S. 78, 123 and State 28.



# PENALTIES

## LOSS OF 5 YARDS

1. Taking more than five times out during either half (except for replacement of injured player).
2. Illegal delay of game.
3. Failure to complete substitution before play starts.
4. Violation of kickoff formation.
5. Player out of bounds when scrimmage begins.
6. Putting ball in play before Referee signals "Ready-for-play".
7. Failure to maintain proper alignment of offensive team when ball is snapped. Also, backfield man illegally in motion.
8. Offside by either team or encroachment on neutral zone.
9. Attempt to draw opponents offside.
10. Crawling by runner.
11. Illegal forward pass (includes intentional grounding of forward pass). Also loss of down.
12. Taking more than two steps after Fair Catch is made.
13. Player on line receiving snap.
14. Any violation of the scrimmage formation.

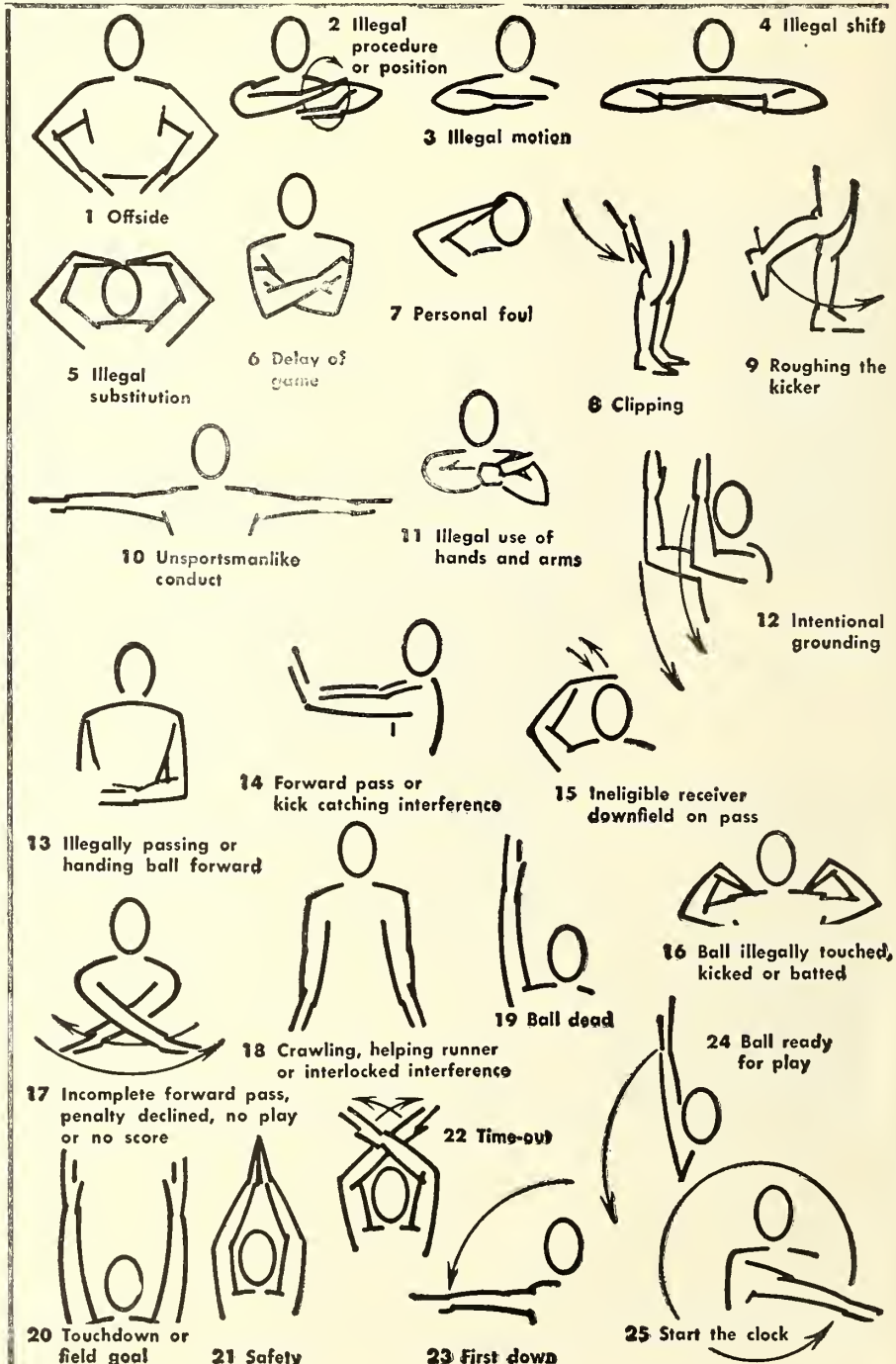
## LOSS OF 15 YARDS

15. Team not ready to play at scheduled time.
16. Violation of rules during intermission.
17. Illegal return of suspended player.
18. Interference by member of offensive team with defensive player making pass interception. (Also loss of down.)
19. Interference with opportunity of player of receiving team to catch a kick.
20. Illegal use of hands or arms by offensive player.
21. Tackling or blocking defensive player who has made fair catch.
22. Roughing the kicker.
23. Piling up, hurdling, clipping.
24. Tackling player out of bounds, or running into player obviously out of play.
25. Coaching from sidelines.
26. Failure to stop one full second following shift.
27. Defensive holding.
28. Invalid Signal for Fair Catch.

## OTHER PENALTIES

29. Striking an opponent with fist, forearm, elbow or locked hands, kicking or kneeling — Mandatory disqualification of offending player plus loss of fifteen yards.
30. Foul within the one yard line—half the distance to the goal.
31. Interference by defensive team on forward pass—passing team's ball at spot of foul.
32. Forward pass being touched by ineligible receiver beyond the line of

- scrimmage—loss of fifteen yards from spot of preceding down and loss of a down.
33. Illegal touching of kicked ball within opponent's ten yard line — touchback.
  34. Flagrantly rough play or unsportsmanlike conduct — Mandatory disqualification plus loss of fifteen yards.
  35. Eligible pass receiver who goes out of bounds and later touches a forward pass — loss of down.





DRINK

*Coca-Cola*

IN BOTTLES

Delicious and Refreshing



**CLEMSON COLLEGE ROSTER**

Ends	No. Name	Ht.	Wt.	Age	Hometown	Class
	46 Joe Bowen*	6-2	190	21	Villa Rica, Ga.	Sr
	57 Ray Bowick	6-1	190	21	Greenwood	Jr
	28 Vernon Carlton	6-2	195	21	Newberry	Jr
	62 Wyatt Cox	6-3	181	19	Atlanta, Ga.	So
	71 Ronald Jordan	6-0	185	19	Florence	So
	63 Walt Laraway*	6-0	180	22	Mckeesport, Pa.	Sr
	79 Dalton Rivers	6-3	200	21	Chesterfield	Jr
	76 Willie Smith*	6-0	195	20	Spartanburg	Jr
	85 Pete Wall*	6-1	205	22	Charleston	Sr
<b>Tackles</b>						
	41 Jack Bush	6-3	205	18	Atlanta, Ga.	So
	82 Joe Hipp	6-1	225	23	Newberry	Sr
	45 Bill Hudson*	6-5	225	20	North Charleston	Jr
	60 B. C. Inabinet*	6-6	240	21	Columbia	Sr
	88 Charlie Lucas	6-3	220	19	High Point, N. C.	So
	44 Dick Marazza*	6-4	218	22	Greensburg, Pa.	Jr
	58 Ken Pace	6-2	225	20	North Charleston	So
	59 Jimmy Padgett	6-2	230	19	Trenton	So
	27 Tommy Sease	6-0	195	20	Clinton	Jr
	51 Johnny Thomason	6-2	215	19	Olanta	So
<b>Guards</b>						
	25 Dick DeSimone*	5-11	195	21	Avonmore, Pa.	Jr
	87 Earl Greene	6-0	200	20	St. Stephens	Jr
	72 John Greene	6-0	210	22	Union	Sr
	33 John Grdijan	5-11	200	25	Rillton, Pa.	So
	42 Leon Kaltenbach	5-10	210	19	Clairton, Pa.	So
	56 Jim McCanless	6-1	220	19	Asheville, N. C.	So
	65 Buck Priestler*	5-11	195	22	LaGrange, Ga.	Sr
	75 Bill Thomas	6-0	200	21	Layton, Pa.	So
<b>Centers</b>						
	24 Wingo Avery*	6-0	210	22	Newnan, Ga.	Sr
	68 Donnie Bunton	6-0	190	20	Pelzer	So
	64 Hampton Hunter*	6-4	220	21	Central	Sr
	47 J. Steinbrecher	6-2	200	19	Barboursv'le, W. Va.	So
<b>Quarterbacks</b>						
	32 Jerry Ard	6-1	200	24	Hemingway	Jr
	73 Bill Barbary	6-2	195	19	Taylors	So
	20 Charlie Bussey*	6-0	162	20	Henderson, N. C.	Jr
	66 Don King*	5-10	165	21	Anderson	Sr
<b>Halfbacks</b>						
	22 Jim Coleman*	6-0	170	20	Honea Path	Jr
	78 Bill Few	6-0	170	21	Rock Hill	So
	43 Frank Griffith*	6-0	195	21	Elberton, Ga.	Jr
	55 Lem McLendon	5-6	163	23	Albany, Ga.	Jr
	40 Joe Pagliei*	6-0	200	21	Clairton, Pa.	Sr
	26 Wade Rogers	5-9	160	23	Mullins	Jr
	53 D. Thompson	5-10	190	22	London, Ont., Can.	Sr
	70 Joel Wells*	6-0	195	19	Columbia	Jr
<b>Fullbacks</b>						
	48 Neuf Ankuta*	6-0	195	22	Brooklyn, N. Y.	Sr
	67 Billy O'Dell*	5-10	195	21	Newnan, Ga.	Sr
	35 Don Rhinehart	5-11	185	21	Inman	Sr
	34 Bob Spooner	5-11	210	20	Ogdensburg, N. Y.	So

\*Lettermen.

COPYRIGHT 1955, THE COCA-COLA COMPANY

**Coca-Cola Bottling Company, Anderson, S. C.**

**C. KIRBY HOOVER, Manager**



# CLEMSON

## PROBABLE STARTING LINEUP

63	WALT LARAWAY	-----	LE
44	DICK MARAZZA	-----	LT
87	EARL GREENE	-----	LG
24	WINGO AVERY	-----	C
33	JOHN GRDIJAN	-----	RG
60	B. C. INABINET	-----	RT
46	JOE BOWEN	-----	RE
66	DON KING	-----	QB
70	JOEL WELLS	-----	LH
40	JOE PAGLIEI	-----	RH
67	BILL O'DELL	-----	FB

## THE TIGER SQUAD

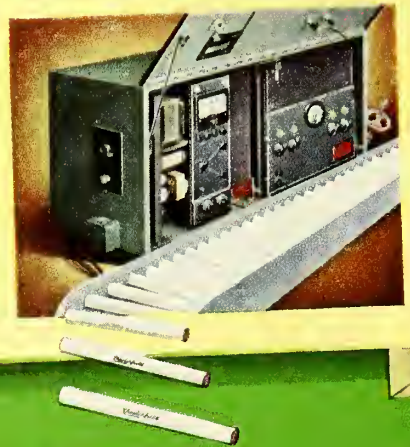
20	Bussey, QB	57	Bowick, LE
22	Coleman, RH	58	Pace, RT
24	Avery, C	59	Padgett, LT
25	DeSimone, RG	60	Inabinet, RT
26	Rogers, RH	61	Neely, C
27	Sease, LT	62	Cox, LE
28	Carlton, RE	63	Laraway, LE
29	Wimberly, LE	64	Hunter, C
30	Strange, RH	65	Priester, LG
32	Ard, QB	66	King, QB
33	Grdijan, RG	67	O'Dell, FB
34	Spooner, FB	68	Bunton, C
35	Rhinehart, FB	70	Wells, LH
36	Deas, RE	71	Jordan, RE
39	Pilot, C	72	J. Greene, RG
40	Pagliei, RH	73	Barbary, QB
41	Bush, LT	75	Thomas, RG
42	Kaltenbach, LG	76	Smith, RE
43	Griffith, RH	78	Few, LH
44	Marazza, LT	79	D. Rivers, RE
45	Hudson, RT	80	Culpepper, RT
46	Bowen, RE	81	Kissam, RH
47	Steinbrecher, C	82	Hipp, RT
48	Ankuta, FB	84	Fisher, QB
51	Thomason, RT	85	Wall, LE
53	Thompson, LH	86	Monroe, RG
54	Giles, LG	87	E. Greene, LG
55	McLendon, LH	88	Lucas, LT
56	McCanless, RG		



*Americ*

**Only Chesterfield is Made the  
Modern Way—with *AccuRay***

Today—discover for yourself what modern science can do to increase your cigarette enjoyment! Try Chesterfield —the cigarette made the modern way... measurably smoother... cooler... best for you!





# GEORGIA

## PROBABLE STARTING LINEUP

85	ROY WILKINS	LE
76	JERRY GRIFFIN	LT
68	LEN SPADAFINO	LG
59	BILL SAYE	C
66	DON SHEA	RG
70	PUD MOSTELLER	RT
84	LANEAIR ROBERTS	RE
11	JIMMY HARPER	QB
22	CONRAD MANISERA	LH
31	CHARLES HARRIS	RH
23	BOBBY GARRARD	FB

## THE BULLDOG SQUAD

10	Hearn, QB	61	Cushenberry, LG
11	Harper, QB	63	Dye, RG
14	Armistead, QB	64	Fowler, RG
15	Young, QB	65	Spooner, LG
18	Comfort, QB	66	Shea, RG
20	Tarleton, LH	67	Anderson, RG
22	Manisera, LH	68	Spadafino, LG
23	Garrard, (C) FB	69	Mitchell, LG
24	Davis, RH	70	Mosteller, RT
25	Bell, LH	71	MacDonald, RT
26	Ruark, FB	72	Meathering'm, T
30	Dukes, RH	73	Van Buren, RT
31	Harris, RH	74	Galbreath, RT
32	Burkhalter, FB	76	Griffin, LT
33	Williams, RH	78	Luck, LT
34	Bracco, FB	79	White, RT
35	Culpepper, FB	80	Watkins, LE
36	Pilgrim, RH	81	Mulherin, LE
38	Orr, RH	82	Arthur, LE
44	Lofton, FB	83	Cooper, RE
45	Sapp, FB	84	Roberts, RE
52	Carrollton, C	85	Wilkins, LE
54	Reese, C	86	R. K. Brown, RE
56	Grubbs, C	87	Bass, RE
57	J. Brown, C	88	Monti, LE
59	Saye, C	89	Clark, RE
60	Vinesett, LG		



*is Best*

**THIS IS IT!** L&M has the purest and best filter your lips ever touched . . . the pure, white Miracle Tip. What's more, L&M gives you a rich, good tasting, and fully satisfying smoke. No wonder smokers everywhere say, "L&M's got everything!"

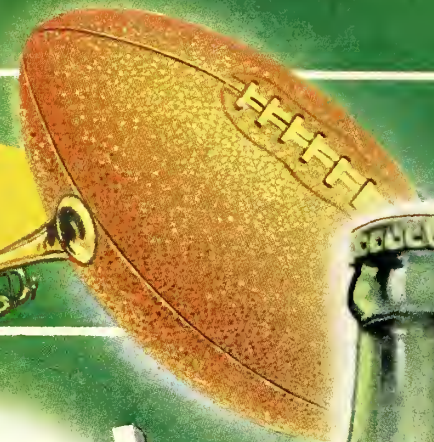
**L&M** - America's Best Filter Cigarette!







There's nothing  
like a Coke



**UNIVERSITY OF GEORGIA ROSTER**

Ends						
No.	Name	Ht.	Wt.	Age	Hometown	Class
80	Bill Watkins	6-1	180	19	Atlanta, Ga.	So
81	Butch Mulherin	6-4	200	20	Augusta, Ga.	Jr
82	Matthew Arthur	6-2	182	21	Fitzgerald, Ga.	Sr
84	Laneair Roberts	6-3	198	20	Fitzgerald, Ga.	Jr
85	Roy Wilkins	6-2	200	20	Dalton, Ga.	Jr
86	R. K. Brown	6-0	180	19	Atlanta, Ga.	So
87	Lindsey Bass	6-4	200	20	Tifton, Ga.	So
88	Angelo Monti	5-10	180	20	Tarrytown, N. Y.	Jr
89	Cleve Clark	6-5	199	22	Albany, Ga.	Sr
Tackles						
70	Pud Mosteller	5-10	215	21	Conover, N. C.	Jr
71	Alex MacDonald	6-0	215	23	Ligonier, Pa.	Jr
72	Mike Meatheringham	6-5	225	18	Birmingham, Ala.	So
73	Bob Van Buren	6-3	215	20	Lorain, Ohio	Jr
74	Ruel Galbreath	6-3	210	20	Dania, Fla.	So
76	Jerry Griffin	6-2	215	21	Atlanta, Ga.	Sr
78	John Luck	6-3	230	20	Cuddy, Pa.	Jr
79	Walter White	6-2	210	21	Toccoa, Ga.	Sr
Guards						
60	Travis Vinesett	5-11	205	20	Gaffney, S. C.	So
61	Tony Cushenberry	6-0	198	20	Albany, Ga.	Jr
63	Wayne Dye	5-10	185	20	Augusta, Ga.	Jr
64	Willie Fowler	5-8	190	21	Athens, Ga.	Sr
65	Johnny Spooner	5-11	185	19	Moultrie, Ga.	So
66	Don Shea	5-11	210	23	Collingdale, Pa.	Sr
67	Mike Anderson	5-10	210	19	Atlanta, Ga.	So
68	Len Spadafino	5-10	190	24	Jersey City, N. J.	Sr
69	George Mitchell	6-0	195	21	Dalton, Ga.	Jr
Centers						
52	Billy Carrollton	5-11	195	22	Monroe, Ga.	Jr
54	Harold Reese	5-11	192	20	Atlanta, Ga.	Jr
56	Clayton Grubbs	6-2	192	21	Bradenton, Fla.	Jr
57	Jimmy Brown	6-0	210	20	Monroe, Ga.	Jr
59	Bill Saye	6-1	196	21	Athens, Ga.	Sr
Quarterbacks						
10	Billy Hearn	6-3	180	18	Eatonton, Ga.	So
11	Jimmy Harper	6-1	172	29	Thomasville, Ga.	Sr
14	Billy Armistead	6-3	190	20	Clarkston, Ga.	Jr
15	Dick Young	6-0	173	21	Pensacola, Fla.	Sr
18	Joe Comfort	5-11	185	19	Washington, Pa.	So
Halfbacks						
20	Wendell Tarleton	5-9	175	20	Atlanta, Ga.	Jr
22	Conrad Manisera	5-9	175	24	Lyndhurst, N. J.	Sr
24	J. B. Davis	6-0	155	18	Guntersville, Ala.	So
25	John Bell	6-1	175	21	Columbus, Ga.	Sr
30	Henry Dukes	5-11	185	20	Augusta, Ga.	So
31	Charles Harris	6-2	205	23	Goodwater, Ala.	Jr
33	Jimmy Williams	6-1	173	21	Athens, Ga.	Sr
34	Nick Bracco	5-8	160	19	Munhall, Pa.	So
36	Harold Pilgrim	6-0	154	21	Gainesville, Ga.	Jr
38	Jimmy Orr	6-0	180	20	Seneca, S. C.	So
Fullbacks						
23	Bobby Garrard	5-10	185	21	Atlanta, Ga.	Sr
32	Ed Burkhalter	5-10	182	20	Augusta, Ga.	Jr
35	Knox Culpepper	5-11	190	21	Columbus, Ga.	Jr
45	Theron Sapp	6-0	190	20	Macon, Ga.	So



DRINK  
**Coca-Cola**  
IN BOTTLES

REG. U.S. PAT. OFF.

"COKE" IS A REGISTERED TRADE MARK

**Coca-Cola Bottling Company, Anderson, S. C.**

**C. KIRBY HOOVER, Manager**



# ATLANTIC COAST CONFERENCE FOOTBALL OFFICIALS

The Atlantic Coast Conference assigns its football officials direct from the Office of the Commissioner, and such assignments are not made public until the day of the game. Brief sketches of the 24 regularly-assigned football officials of the conference staff are listed below for your information and convenience, as follows:

**Dr. W. H. Breeland**, dental surgeon, Belmont, N. C. Graduate Emory University. Past president 1st District Dental Society of N. C., member executive committee Dental Foundation of N. C. Past master Masonic Lodge. Former member city council, member school board. Scientific clinician and essayist on program of American Academy of Restorative Dentistry and of American Dental Assn.

**Wilburn C. Clary**, assistant superintendent, The Children's Home Inc., Winston-Salem, N. C. Graduate University of South Carolina. Since 1937 coach at Children's Home, became principal 1944, became assistant superintendent 1949. Executive secretary of the Western North Carolina High School Activities Assn.

**Robert A. Collier**, attorney at law, Statesville, N. C. Graduate Wake Forest College. Former president of N. C. State (Class C) baseball league. Former mayor of Statesville, President of the 15th Judicial District Bar Assn. Former president Rotary Club. In 1929 national commander of VFW.

**Babe Daniel**, state director of sales, Great Central Insurance Co., Charlotte, N. C. Graduate University of North Carolina. Member Charlotte Quarterback Club.

**Gibbes Dehnhns**, letter carrier, United States Post Office, Columbia, S. C. Graduate Lenoir Rhyne College. Member board of recreation at Eau Claire, S. C. Coach Eau Claire American Legion Junior baseball team. Member Fraternal Order of Eagles.

**John C. Donohue**, associate general agent, Penn Mutual Life Insurance Co., Baltimore Md. Graduate St. Johns College of Annapolis, Md. Coach at St. Johns until 1939. Former president Baltimore Life Underwriters Assn. Trustee of National Assn., of Life Underwriters. Past state chairman of Heart Fund. Member board of visitors and governors at St. Johns College.

**Carl B. Deane**, sporting goods dealer, Downtown Athletic Store, Charlottesville, Va. Graduate Duke University. Member Elks Club.

**William R. Dukes**, service station owner, Dukes Gulf Service, Orangeburg, S. C. Graduate University of

South Carolina. Former president Southern Football Officials Assn.

**Paul Dunham**, assistant manager, Rustin Furniture Co., Salisbury, N. C. Graduate University of Tulsa, two years at George Williams College for special YMCA training. Member official board First Methodist Church. Member Civitan Club.

**Charles D. Edmonds**, senior budget examiner, Veterans Administration, Arlington, Va. Attended University of Illinois, graduate Transylvania College. Masters degree in physical education Columbia University. Member Masonic Lodge. Rank of lieutenant colonel U. S. Army reserve corps.

**William R. Edwards**, principal of elementary school, The Children's Home Inc., Winston-Salem, N. C. Graduate Appalachian State Teachers College. Member Sertoma Club.

**Tatum Gressette**, director South Carolina Retirement System, Columbia, S. C. Graduate University of South Carolina. Administrator of South Carolina Public Employees Social Security Agency. Member Lions Club.

**James W. Grey**, secretary, Adon Smith Associates (consultants for employer - employee benefit plans), Charlotte, N. C. Graduate Davidson College. Coached in Charlotte schools. Insurance business since 1931. Member Charlotte Estate Planning Council. Deacon in First Presbyterian Church. Member Rotary Club.

**Bee Harper**, owner of Bee Insurance Agency, Columbia, S. C. Attended University of South Carolina. Athletic director of American Legion Post. Director of Navy Legion Club. Member VFW. Member Masonic Lodge, Shriner.

**Joby Hawn**, recreation director, P. H. Hanes Knitting Co., Winston-Salem, N. C. Graduate Lenoir Rhyne College. President North Carolina Recreation Society. Member of American Recreation Society Industrial Group. Member Civitan Club.

**Sidney M. Hughes**, partner Frito Co., and sales manager Dr. Pepper Bottling Co., Norfolk, Va. Graduate Springfield College. Member Norfolk Sports Club. Member Norfolk Yacht Club.

**Dave Kaufman**, administrative department, Baltimore City College, Baltimore, Md., and owner-director of Camp Ha-Wa-Ya, Harrison, Maine. Graduate Johns Hopkins University. Coached football at Johns Hopkins and Baltimore City College. Member Masonic Order.

**Harry Marchant**, sporting goods salesman, Johnson-Lambe Co., Raleigh, N. C. Graduate Durham High School. Member Junior Chamber of Commerce. Former president Durham Emergency and Rescue Squad.

**M. E. McClenny**, owner-operator, Mickey's Pastry Shop, Goldsboro, N. C. Graduate Goldsboro High School. Member Lions Club, Loyal Order of Moose, American Legion, 40 and 8. Trustee of Friends Church.

**Ray Moore**, sales representative, B. C. Remedy Co., Columbia, S. C. Graduate Camden High School. Past president Pharmaceutical Assn., TM-A. Past district governor South Carolina Junior Chamber of Commerce. 32nd degree Mason and Shriner. Deacon in Sherwood Forest Associated Reformed Presbyterian Church.

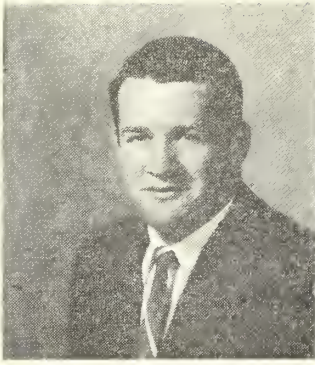
**Harwood Smith**, supervisor, American Tobacco Co., Durham, N. C. Graduate Duke University. Assistant coach at Duke several years.

**Charlie Timmons**, industrial engineer, Gulf Oil Co., Greenville, S. C. Graduate Clemson College. Former pro player Brooklyn Dodgers of All-American Conference. Member Greenville Touchdown Club. Sunday school teacher at St. Paul Methodist Church.

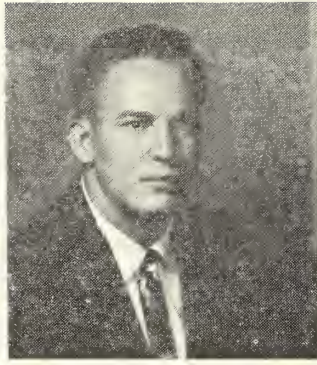
**W. M. Wilbanks**, recreation director, Ware Shoals Community Foundation of Riegel Textile Corp., Ware Shoals, S. C. Attended Washington College. President Southern Textile Athletic Assn. Instructor in first aid American Red Cross. Member Lions Club, American Legion, Masonic Lodge.

**Paul K. Wood**, municipal engineer, City of Lexington, Lexington, N. C. Attended Georgia Tech, graduated North Carolina State College, bachelor of civil engineering degree in 1949.

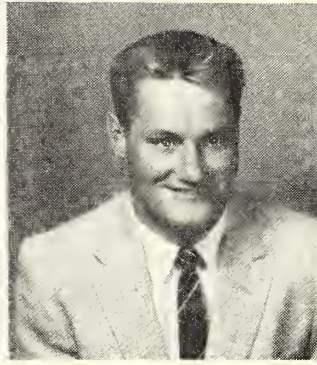




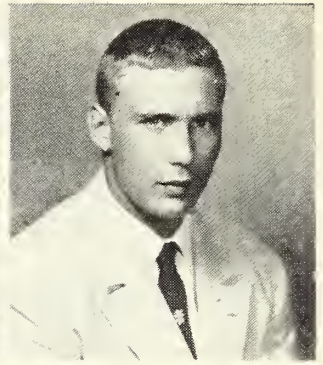
**Donald Rhinehart** came to Clemson as a fullback, he played second string guard at the start of the '54 season and is now back at fullback. He's an honor student in the classroom.



**Johnny Greene** is one of the roughest players on the squad. Was nicknamed "captain of the bo-hunks" last fall. Has seen limited action only to date. Is good linebacker from guard position.

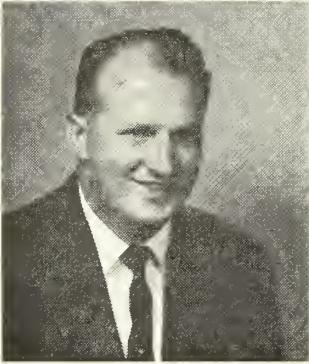


**Vernon Carlton**, alias "The Rooster", has been a hot and cold performer. He's a good blocker and defensive player but only average at receiving passes from his end position.

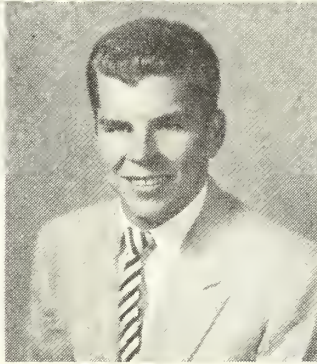


**Charlie Lucas** was one of the biggest men on the 1954 freshman team. A 225-pound tackle today, he's a fine prospect. Only thing he lacks is additional aggressiveness.

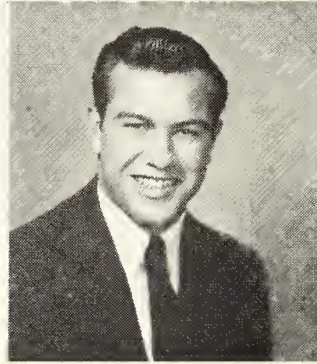
## C L E M S O N P L A Y E R S



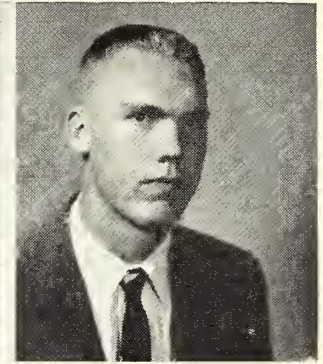
**Joe Hipp** returned to the Tigers out of the service in February. He's one of the lighter tackles, tipping the scales at slightly under 200 pounds. Will likely see limited duty.



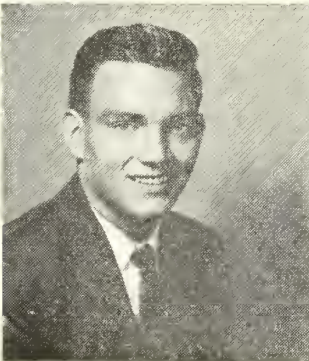
**Joe Pilot** is one of a handful of Pennsylvanians who made good scholastically as freshmen at Clemson last year. Has a good attitude and will likely play a lot of center eventually.



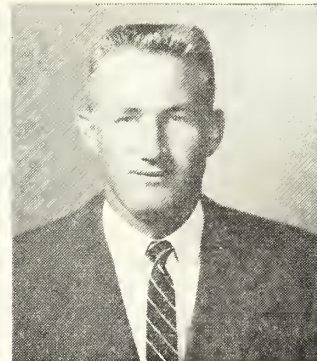
**Harold Strange** led the state's high school backs in scoring two years ago with 31 touchdowns at Camden Academy. Injured his knee as a freshman and was operated on in July.



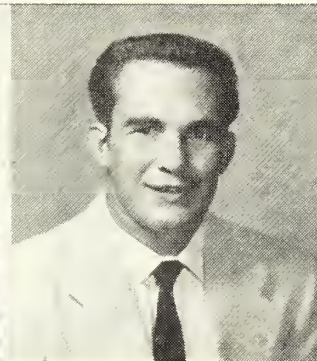
**Bobby Fisher** was the Cubs' second string quarterback last fall. He sparked the Cubs to one touchdown in the Carolina game but later broke his leg. Passing is his strong suit.



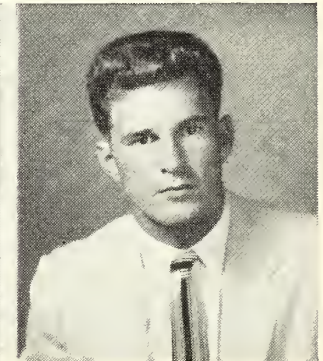
**Bob Giles** played first and second string guard with the Cubs last fall. Was one of Cub catchers in baseball, too. Needs experience before he'll help varsity much. Good student.



**Ray Bowick** is in his 4th season at Clemson as an end. Tremendous blocker but poor pass-receiver. He was a dashman on the varsity track team. Works at Greenwood YMCA in summer.



**Jerry Ard** was "bohunk" quarterback in '52, Clemson's final year with the single wing. Recently discharged by the Army after two years of service. Played some ball while in the Army.



**Benny Kissam** was a freshman end in 1953 but has been operating from a halfback position since that time. Don Wade coached him during his senior year at Waynesboro (Ga.) High.



# HEYWARD MAHON COMPANY



The Quality Store For  
Men and Boys



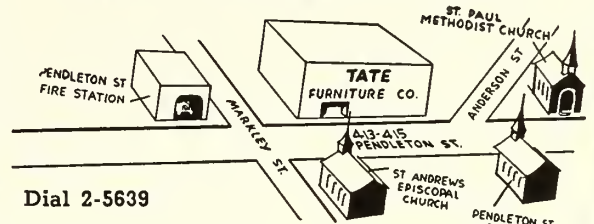
GREENVILLE  
SOUTH CAROLINA

Clemson Headquarters in Greenville

JACK TATE

GEORGE TATE

# TATE FURNITURE CO.



Dial 2-5639

GREENVILLE, S. C.

"Buy With Confidence"

For the BEST Deal Anywhere

CASH or TRADE



Williams Chevrolet Co.  
ANDERSON, SOUTH CAROLINA

## LOCKVENT

Aluminum Awnings  
Ornamental Iron

Nothing down -- Easy Monthly Payments

## Martin Construction Co.

234 E. Benson St.      CAnal 5-2221

ANDERSON, SOUTH CAROLINA

## Lee's

## Amoco Service Station

"Most Modern in Clemson"

Fast, Friendly, Courteous Service

Ph. 6696      CLEMSON      Hwy. 123

Clean Modern Rest Rooms

## CLEMSON'S TIGERS

"The Best in Sportsmanship"

## ANDERSON, S. C.

"Clemson's Best Friend"

## CAROLINA

## NATIONAL BANK

"The Best in Banking"



"ANDERSON'S HOME OWNED BANK"

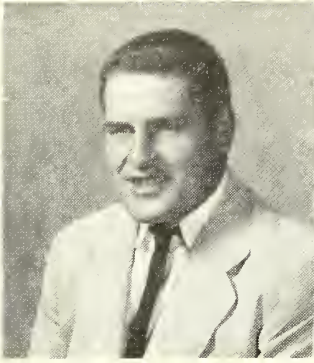


Two convenient locations:

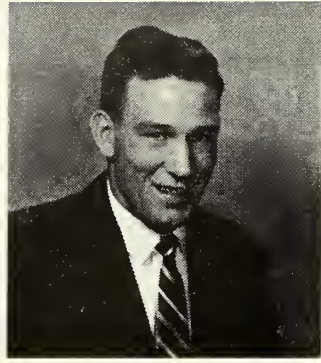
Main Office  
On the Square

Drive-In Branch  
1510 N. Main St.

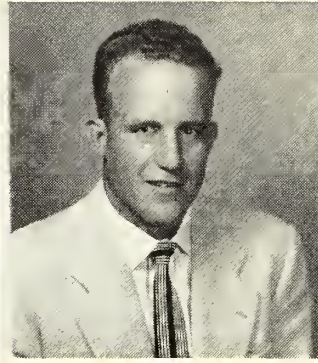




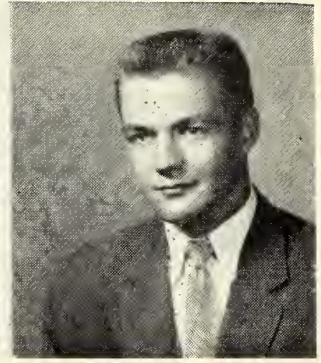
**Terry Culpepper** saw limited action only as a Cub tackle last fall. He came to Clemson in February of 1954 after prepping a year at Camden Academy. He calls Augusta, Ga., home.



**Dalton Rivers** is in his fourth season at Clemson. He was used sparingly as a football sophomore last fall. Would probably be a regular defensive end if two-platoon football was allowed.



**Buddy Rivers** is another victim of the limited substitution rules. Very strong defensively, he's only average as offensive halfback. Was just discharged from the Armed Forces prior to school.

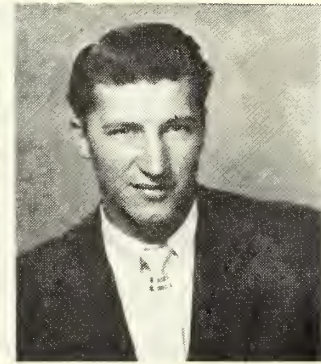


**Kent Monroe** is the "brains" of the Clemson football team. A guard, he's made almost nothing but A's in tough electrical engineering. His father's a doctor. He's the team's only Tennessean.

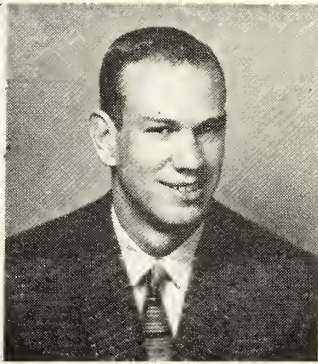
## C L E M S O N P L A Y E R S



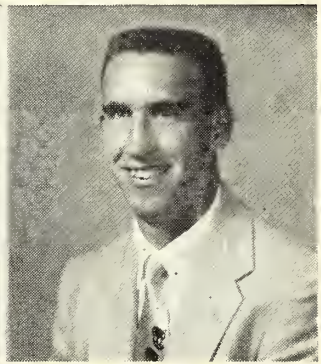
**Bill Neely** was a standout on Rock Hill's state championship team of 1953. He started several games as center for the Cubs last fall. His biggest handicap is lack of weight.



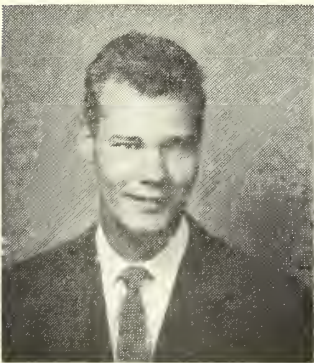
**Jimmy Padgett** is one of the best prospects on the squad. He's extremely green, having played only one year of ball before coming to Clemson as fullback last fall. Is tackle and kickoff man today.



**Earl Deas** was a member of Rock Hill's strong team of 1953. He's a non-scholarship boy who likes the game. Lack of size hurts his chances of playing much this year.



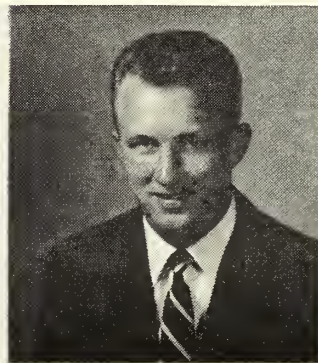
**Wyatt Cox** scored on a touchdown pass against North Carolina State's Frosh last fall. He underwent a knee operation last winter. Is fine offensive end.



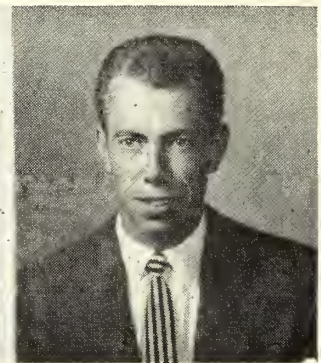
**Fred Wimberly** is a non-scholarship football player from Camden. A sophomore end, he plays the game because he loves it. Was a teammate of freshman flash Horace Turbeville.



**Earl Herndon** is in his second year as co-senior manager. He was initiated into the Block C Club last year. A native of Fountain Inn, he's been a hard worker from the beginning.



**Joe Bolt** was a junior manager last fall. Because of his hard work, senior bosses Herndon and Fleming have put him on an equal par with them. He's a native of Anderson.



**Gerald Fleming** worked as a newspaper printer two and one-half years before attending Clemson. He's an honor student in his Textiles major today and was an honor military student at Ft. Knox last summer.





Sewing room of The Clemson Plant, Clemson, S. C.

## On the field or in the plant **GOOD TEAMWORK SCORES HIGH!**

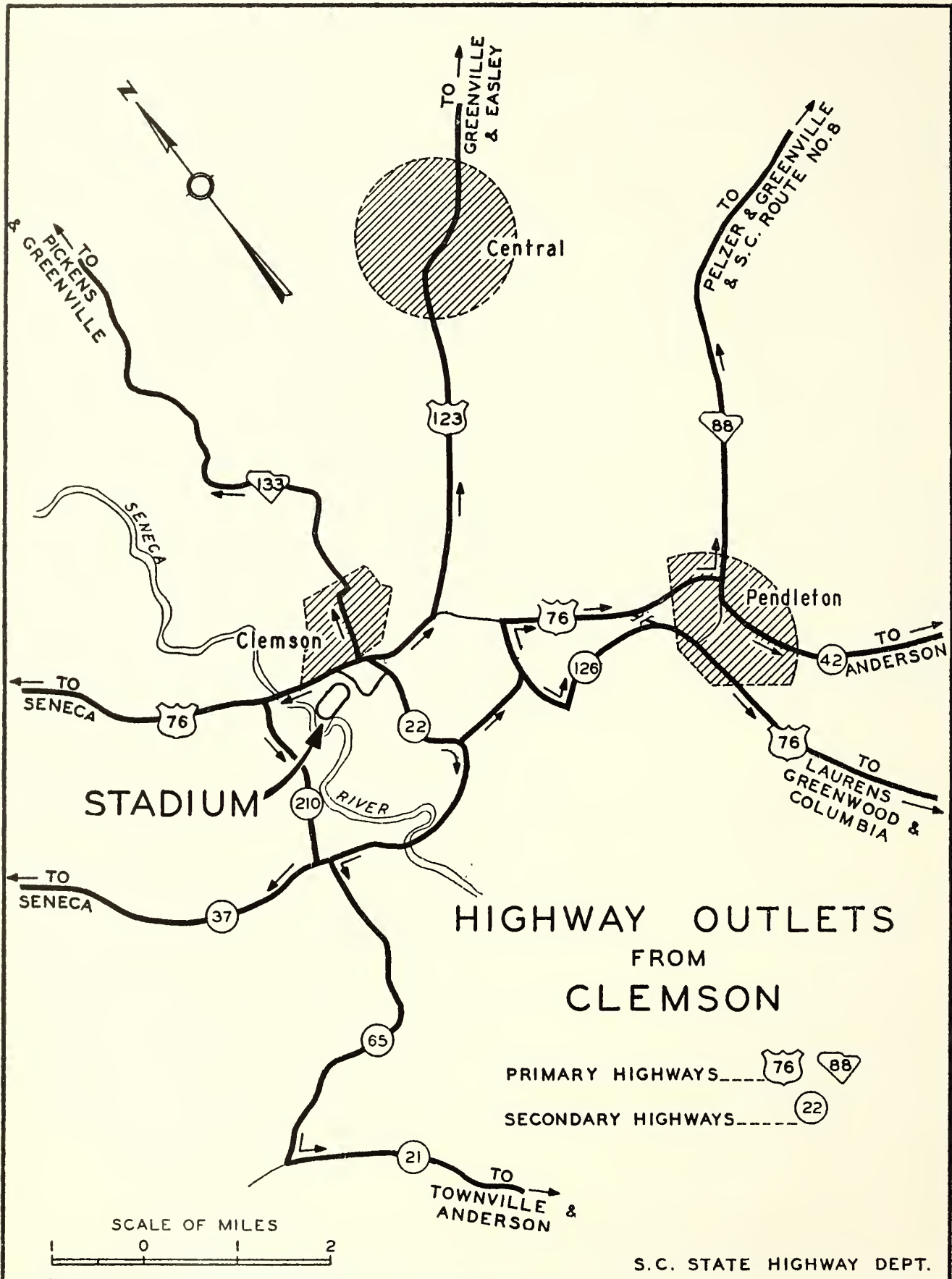
Your football squad knows how important good teamwork is in rolling up scores against rugged competition. Training, condition, strategy are vital . . . but precision teamwork is the key to victory. It's the same way in our plant at Clemson. Every single job must contribute its own important part in the process of converting raw cotton into packaged sheets and pillow cases. Whether it's eleven skilled men on the gridiron—or eight-hundred skilled people in our plant—good teamwork scores high!



# J. P. Stevens & Co., Inc.

Fine Fabrics since 1813 • Utica and Mohawk Cotton Mills, Clemson, S. C.







# In COLUMBIA, S. C. Stay at Hotel *Wade Hampton*

You'll know the true meaning of southern hospitality when you visit the Wade Hampton. Service that is tailored to your needs, guest rooms furnished and appointed for your comfort and food that will earn your praise. Completely air conditioned, Hotel Wade Hampton is located in the heart of Columbia, directly across from the historic State Capitol. Radios or television in guest rooms.

THOMAS JEFFERSON  
Birmingham, ALA.



ADMIRAL SEMMES  
Mobile, ALA.



WASHINGTON  
Washington, D. C.



MONTICELLO  
Norfolk, VA.



MOUNTAIN LAKE  
Mountain Lake, VA.



CLAYPOOL  
Indianapolis, IND.



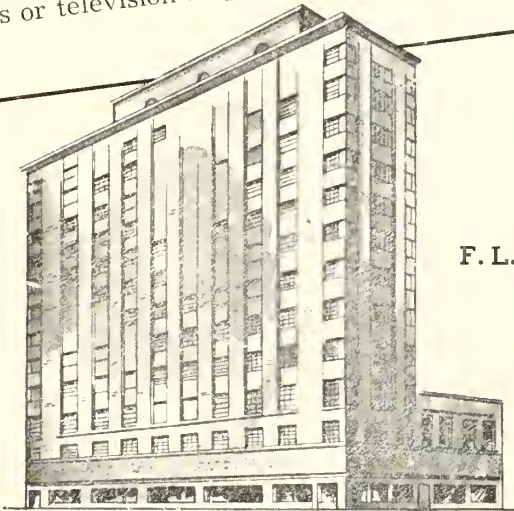
PAXTON  
Omaha, NEB.



BAKER  
Dallas, TEX.



JUNG  
New Orleans, LA.



F. L. (Hugh) Smith  
Manager

## AFFILIATED NATIONAL HOTELS

ALABAMA	TEXAS	
HOTEL ADMIRAL SEMMES..... Mobile	HOTEL STEPHEN F. AUSTIN..... Austin	
HOTEL THOMAS JEFFERSON..... Birmingham	HOTEL EDSON..... Beaumont	
DISTRICT OF COLUMBIA		
HOTEL WASHINGTON..... Washington	HOTEL BROWNWOOD..... Brownwood	
INDIANA		
HOTEL CLAYPOOL..... Indianapolis	HOTEL BAKER..... Dallas	
LOUISIANA		
JUNG HOTEL..... New Orleans	HOTEL TRAVIS..... Dallas	
HOTEL DESOTO..... New Orleans	HOTEL CORTEZ..... El Paso	
NEBRASKA		
HOTEL PAXTON..... Omaha	HOTEL BUCCANEER..... Galveston	
NEW MEXICO		
HOTEL CLOVIS..... Clovis	HOTEL GALVEZ..... Galveston	
SOUTH CAROLINA		
HOTEL WADE HAMPTON..... Columbia	HOTEL JEAN LAFITTE..... Galveston	
	CORONADO COURTS..... Galveston	
	MIRAMAR COURT..... Galveston	
	HOTEL PLAZA..... Laredo	
	HOTEL LUBBOCK..... Lubbock	
	HOTEL FALLS..... Marlin	
	HOTEL CACTUS..... San Angelo	
	HOTEL MENDER..... San Antonio	
	ANGELES COURTS..... San Antonio	
	VIRGINIA	
	HOTEL MOUNTAIN LAKE..... Mountain Lake	
	HOTEL MONTICELLO..... Norfolk	



AFFILIATED NATIONAL HOTELS

J. CAREY



"Remember the Day With Snapshots"



PROMPT SERVICE ON DEVELOPING  
YOUR FILM THROUGH YOUR  
FAVORITE DRUG STORE OR

**Graham-Globe  
Photo Service Inc.**

21 S. Main St. -:- 11 Hammond St.  
GREENVILLE, S. C.

**McCALL BUICK  
COMPANY**

**Easley, S. C.**

**KLUTTZ STEAK HOUSE & CAFETERIA**  
**Anderson, South Carolina**

Serving the same fine Steaks, Fried Chicken  
Country Ham, Sea Food and Other Fine  
Food We Have Served for the Past  
10 Years at Clemson.

.....  
OUR FOOD SPEAKS FOR US  
.....



THE CLEMSON  
TIGER HAS A  
NATURAL-BORN  
WELCOMING  
COMMITTEE  
FOR THE  
GEORGIA  
BULLDOG...



**BILLY  
O'DELL**  
SENIOR  
FULLBACK  
FROM  
NEWMAN, GA.

**WINGO  
AVERY**  
SENIOR  
CENTER  
FROM  
NEWMAN, GA.

MURRAY  
OLDERMAN



QUALITY PICTURES FOR  
EVERY OCCASION

WEDDINGS                      BIRTHDAYS  
BUSINESS OPENINGS

## CLEMSON STUDIOS

(FORMERLY BARNETT'S)

Wesley Hughes, owner              Phone 5148

CHAMPION SPORTSWEAR ITEMS  
WITH CLEMSON INSIGNIA FOR  
Men    Women    Children

SOLD BY  
**HOKE SLOAN**  
AT CLEMSON

# CLEMSON COLLEGE'S TWO-GAME STATISTICS

Clemson 33    Presbyterian 0  
Clemson 20    Virginia 7

## TEAM STATISTICS . . .

### TWO GAMES

	Clem.	Va.	All Games	
			Clem.	Opps.
First downs rushing	14	6	22	14
First downs passing	2	0	7	0
First downs penalties	1	1	1	1
Total first downs	17	7	30	15
Rushing attempts	65	22	89	70
Net Yards rushing	236	113	395	282
Passes attempted	11	9	25	17
Passes completed	3	1	10	4
Passes had intercepted	0	2	2	3
Net yards passing	39	0	162	17
Total number plays	76	31	112	87
Net yards gained	275	113	557	299
Number times punted	4	5	8	10
Punt average	29.3	35.4	32.3	39.1
Punts returned	3	2	7	3
Average punt returned	13.0	9.5	14.9	7.3
Kickoffs returned	3	2	4	8
Average kickoff return	25.0	14.5	21.5	17.3
Penalties	11	5	12	9
Yards lost penalties	101	65	106	95
Fumbles	4	2	5	10
Fumbles lost	0	1	0	5
Touchdowns rushing	3	1	6	1
Touchdowns passing	0	0	2	0
Total touchdowns	3	1	8	1
Field Goals	0	0	0	0
Safeties	0	0	0	0
Extra points	2	1	5	1
Total points	20	7	53	7

## INDIVIDUAL STATISTICS . . .

	Rushing		Passing			Totals	
	Plays	Net	Att.	Com.	Gain	Plays	Gain
O'Dell	28	131	0	0	0	28	131
Wells	14	95	0	0	0	14	95
King	7	0	13	6	92	20	92
McLendon	3	50	0	0	0	3	50
Pagliei	13	49	0	0	0	13	49
Barbary	0	0	5	2	46	5	46
Coleman	8	33	0	0	0	8	33
Ankuta	4	23	0	0	0	4	23
Spooner	6	18	0	0	0	6	18
Bussey	3	-10	7	2	24	10	14
Griffith	2	5	0	0	0	2	5
Few	1	1	0	0	0	1	1

### SCORING

	TD	PAT	Tot.
O'Dell	2	0	12
McLendon	1	0	6
Pagliei	1	0	6
Bowen	1	0	6
Laraway	1	0	6
Wells	1	0	6
Ankuta	1	0	6
King	0	3	3
Bussey	0	2	2

### RECEIVING

	Caught	Yds.	TD
Bowen	3	61	1
Laraway	2	32	1
Wall	2	46	0
Coleman	1	8	0
Jordan	1	4	0



"Yeah, that team is playing like one man, and they could use ten more!"



# U. OF GEORGIA'S TWO-GAME STATISTICS

Mississippi 26 Georgia 13  
Georgia 14 Vanderbilt 13

## TEAM STATISTICS . . .

TWO GAMES	Georgia	Opps.
First downs rushing	10	14
First downs passing	14	12
First downs penalties	1	2
Total first downs	15	28
Number of rushes	78	80
Yards gained rushing	253	306
Yards lost rushing	42	109
Net yards rushing	211	207
Passes attempted	31	37
Passes completed	16	20
Passes had intercepted	2	1
Yards gained passing	314	295
Total number plays	109	117
Total offense (rush-pass)	525	502
Number punts	13	11
Punting average	39.0	41.2
Punts returned	5	9
Yards punts returned	6	87
Number kickoff returns	9	5
Yards kickoffs returned	140	77
Number penalties	10	11
Yards penalized	93	118
Number fumbles	2	2
Fumbles lost	2	2
Touchdowns rushing	2	3
Touchdowns passing	2	2
Total touchdowns	4	5
Field goals	0	2
Safeties	0	0
Extra points	3	3
Total points	27	39

## INDIVIDUAL STATISTICS . . .

	Rushing		Passing			Totals	
	Plays	Net	Att.	Com.	Gain	Plays	Gain
Young	4	-2	23	13	268	27	266
Harper	17	20	8	3	46	25	66
Garrard	17	51	0	0	0	17	51
Culpepper	10	42	0	0	0	10	42
Manisera	11	31	0	0	0	11	31
Harris	7	30	0	0	0	7	30
Davis	1	12	0	0	0	1	12
Bell	5	12	0	0	0	5	12
Lofton	3	11	0	0	0	3	11
Orr	1	2	0	0	0	1	2
Tarleton	2	2	0	0	0	2	2

## SCORING

	TD	PAT	Tot.
Clark	1	0	6
Manisera	1	0	6
Orr	1	0	6
Young	1	0	6
Cooper	0	2	2
Comfort	0	1	1

## RECEIVING

	Caught	Yds.	TD
Orr	7	176	1
Davis	2	33	0
Clark	2	22	1
Roberts	1	22	0
Mulherin	1	20	0
Manisera	1	17	0
Wilkins	1	16	0
Bell	1	8	0

## PATRONIZE OUR ADVERTIZERS

Abbott's Mens Shop	page 65
Amerotron Corporation	page 13
Anderson Newspapers	Inside Cover
Ballenger-Price Motors	page 56
Ballentine Ford Sales	page 11
Ballentine & McClellan Motors	page 31
Ballentine's Meats	page 64
Ballentine Super Market	page 29
Beeson-Finney Co.	page 53
Belton Bottling Company	page 27
Bill Dillard's Sporting Goods	page 31
Borden's Ice Cream	page 65
Byers Men's Shop	page 1
Calaham-Liberty Motors	page 29
Campus Esso Station	page 64
Carolina Creme Donut Shop	page 25
Carolina National Bank	page 39
Carolina Scenic Trailways	inside back cover
Central Concrete & Plaster Co.	page 21
Central Hardware Company	page 55
Central Roller Mill	page 15
Champion Sportswear	page 46
"Chink" Freeman's Esso	page 59
Chiquola Manufacturing Co.	page 62
Chesterfield Cigarettes	pages 34, 35
Clayton Chevrolet Company	page 60
Clemson Cafeteria	page 23
Clemson DeLuxe Motel	page 25
Clemson House	page 31
Clemson Service Station	page 56
Clemson Soda Shop	page 63
Clemson Studios	page 46
Clemson Theatre	page 7
Coble Dairy Products	page 20
Coca Cola	pages 33, 36
Crane Chevrolet Co.	page 67
Daniel Construction Co.	page 2
Dan's	page 48
Dixie Cleaners	page 63
Dixie Home Stores	page 55
Duckett Funeral Home	page 67
Duke Power Company	page 27
Eagle Furniture Company	page 53
Easley Bank	page 65
First Federal Savings & Loan	page 20
Graham-Globe Photo Service	page 44
Greenville Newspapers	page 16
Greenwood Packing Company	page 54
Hale's Jewelers	page 58
Harper Brothers	page 27
Heyward Mahon Company	page 39
Hoke Sloan's	page 60
Howard Johnson's	page 68
IPTAY	page 52



**CLEMSON'S COUNTRY GENTLEMEN**

Clemson's football team is known everywhere as "The Tigers", but they were also dubbed "Country Gentlemen" by the late "Scoop" Lati-mer some years back — and rightly so.

Though Clemson students of today are probably more "citized" than they were in the College's beginning, still most of the boys enrolled hail from either small communities or the country.

Almost without exception these young men have been endowed with solid upbringing and show their good manners everywhere. This has never been truer than on the football field in recent years.

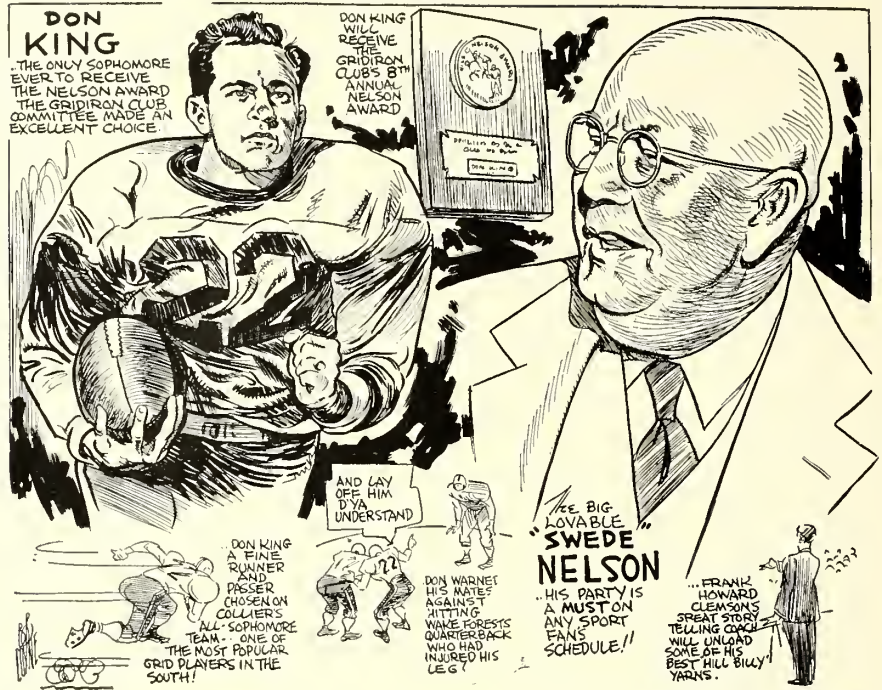
Don King's gentlemanly ways earned for him the nation's top sportsmanship award in 1953 — Nils (Swede) Nelson Award presented annually by the Boston Gridiron Club. (Cartoon depicting background of Award at right.)

But King is just one of the many fine, high type boys playing on the Clemson varsity football team this fall. Don is given special mention because of his receiving the award, but as he graciously said at the banquet in Boston in January 1954:

"Receiving this award is the greatest thing that has ever happened to me. I know there are many other

**The Gridiron Club Salutes!**

—By Bob Coyne



Reprinted from The Boston Post.

football players more deserving of it than I am, but I'm glad you chose me."

A dozen or more players on the 1955 Clemson team fall in the category of outstanding college football sportsmen. They love the game, play it hard and try their best to win, but there's also that intangible thing called sportsmanship which makes

them fully conscious of fair play and honor.

We like to think all the Clemson players qualify for the Nelson Award by showing conduct on the gridiron which demonstrates a high esteem for the football code and exemplifies sportsmanship to an outstanding degree."

Brent Breedin

Clemson Students Eat and Meet at . . .

**DAN'S**

"For a Quick Snack Before and After the Game"

SANDWICHES

SHORT ORDERS

MODERN FACILITIES IN THE NEW LOCATION

Across From The Post Office

## *You Will Really Need Help . . .*

When Your Goal Posts Appear to Be a Thousand Yards Away  
When You Have Badly Fumbled, and Can't Recover  
When The Field Is Heavy and You Bog Down Fast  
When You Have Lost Valuable Gains  
When The Signals You Get Are Both Confusing and Fuzzy  
When Your Opposition Is Knocking You Out of the Field  
When You Seem Boxed In, No Matter Where You Turn  
When Fate Penalizes You for Being Off Guard  
When The Whole Game Seems Definitely "Shot"

CALL ON US FOR REINFORCEMENTS



We Have Seasoned Players Who Know the Score, Can Both  
Carry the Ball for You and Run Your Interference.

We Handle No Inflated Pigskins, But Do Go "Whole Hog" in  
Rendering a Complete Banking Service.



### ***The South Carolina National Bank***

Member Federal Deposit Insurance Corporation

On the Square — On the Corner

Also at 815 North Main Street

DRIVE-IN AND PARKING FACILITIES

**Anderson, South Carolina**



# TIGERS HOST TO WAKE FOREST 4 WEEKS FROM TODAY

In what is shaping into one of Clemson's best games of the year the Wake Forest contest to be played here at 2 p.m. on Saturday afternoon, October 29, will match a couple of Atlantic Coast Conference "dark horses"—the Deacons and Tigers. Both teams are unbeaten to date, Wake Forest with victories over Virginia Tech 13-0 and South Carolina 34-19.

In addition to the traditional game, it will also be IPTAY-Band Day. Members of IPTAY will be honored, and quite a large number of high school bands will be on hand to perform before the game and at halftime.

The Demon Deacons and the Tigers played a thrilling 32-20 ball game in Charlotte, N. C., last fall, with King and Wake's Nick Consoles engaging in an aerial duel which Clemson won in the final minutes of play.

In the line, the Deacons feature All-America candidate Bob Bartholomew, a husky young man who had to take a back seat to the Tigers' B. C. Inabinet last year in Charlotte.

## HOMECOMING WITH MARYLAND

Maryland, ranked number one in the nation today, invades Clemson for the second time on Saturday afternoon, November 12, for the Tigers' Homecoming.

Clemson has given a good account of itself against the Terrapins for two straight years though losing by shutout scores, 20-0 and 16-0. Last year the Tigers outplayed Maryland in every department but the all-important scoring one.

A highlight of the Clemson defensive record last fall was the holding of Maryland to minus one yard total offense and no first downs in the second half of play.

## GAME INFORMATION

- OCT. 9— RICE INSTITUTE at HOUSTON, TEXAS —** 9 p.m. (EST) — Series record, 1-1-0. Clemson won last game 20-14, in 1951. Ticket price, \$3.25.
- OCT. 20— SOUTH CAROLINA at COLUMBIA — (Big Thursday) —** 2 p.m. — Series record, 29-20-3. Clemson lost last game, 8-13, in 1954. Ticket price \$4.80 (sellout).
- OCT. 29— WAKE FOREST at CLEMSON —** 2 p.m. — Series record, 12-8-0. Clemson won last game 32-20, in 1954. Ticket price, \$3.50.
- NOV. 5— VIRGINIA TECH at ROANOKE, VA. —** 1:30 p.m. — Series record, 5-6-1. Clemson lost last game 7-18, in 1954. Ticket price, \$3.50.
- NOV. 12— MARYLAND at CLEMSON — (Homecoming) —** 2 p.m. — Series record, 0-3-0. Clemson lost last game, 0-16, in 1954. Ticket price, \$3.50.

**NOV. 19— AUBURN at MOBILE, ALA. —** 3 p.m. (EST) — Series record, 12-23-2. Clemson lost last game 6-27, in 1954. Ticket price, \$3.75.

**NOV. 26— FURMAN at GREENVILLE —** 2 p.m. — Series record, 25-10-4. Clemson won last game 27-6, in 1954. Ticket price, \$3.50.

## PATRONIZE OUR ADVERTIZERS

Irving L. Wilson Co. ....	page 12
Jax's Hot Shoppes .....	page 31
J. E. Sistine Company .....	page 14
J. P. Stevens Company .....	page 41
King's Laundry & Dry Cleaning .....	page 53
King Oil Company (Shell) .....	page 66
Key's Printing Company .....	page 60
Klutz Steak House .....	page 44
Laughridge's Men's Shop .....	page 20
L. C. Martin Drug Co. ....	page 4
Lee's Amoco Service Station .....	page 39
Lucky Strike Cigarettes .....	back cover
Martin Construction Company .....	page 39
Maxwell Bros. & McCallum .....	page 25
Mauldin Chevrolet Co. ....	page 68
McCall Buick Company .....	page 44
McDaniel Implement Co. ....	page 11
Merita Bread and Cakes .....	page 15
Michael's Restaurant .....	page 29
Morris & Company .....	page 58
Oliver Sales & Service .....	page 56
Pendleton Oil Mill .....	page 7
Pendleton Motor Company .....	page 65
Pepsi Cola .....	page 57
Pet Dairy Products .....	page 63
Pete's Drive-In No. 5 .....	page 61
Poinsett Hotel .....	page 68
Poinsett Lumber & Mfg. Co. ....	page 64
Radio Station WANS .....	page 61
Ralph Hayes Motors .....	page 21
Riddle-Jones, Inc., Furniture .....	page 67
R. L. Bryan Company .....	page 55
Rosamond's Goodyear Service .....	page 9
Sam's Luncheonette .....	page 11
Shining Tower Restaurant .....	page 27
Shirtmaster Company .....	page 58
South Carolina National Bank .....	page 49
Stone Brothers .....	page 25
Sullivan Hardware Co. ....	page 60
Tate Furniture Company .....	page 39
T&D Trim Shop .....	page 15
Traco Products Co. ....	page 21
Wade Hampton Hotel .....	page 43
Welborn Bus Line .....	page 23
Welborn Shoes .....	page 29
Williams Chevrolet Company .....	page 39

# CUBS WIN OPENER, FACE GA. TECH HERE NEXT SATURDAY

Clemson's Cubs will be seeking their second victory in a row here next Saturday night, Oct. 8, when they entertain a powerful Georgia Tech Freshman squad. Last Saturday night, in rainy weather, the Clemson Frosh opened their five-game campaign with a 14-0 victory over invading North Carolina State.

Several highly-touted freshmen lived up to pre-game billing in powering the Baby Bengals in the successful opener. Ted Moseley, quarterback from Atlanta, Ga., called an outstanding game while the running of Pickens' Rudy Hayes, Don Gilpin of Connellsville, Pa., and Larry Rudin of Atlanta stood out.

Coaches were also pleased with the blocking of fullback James Stevens of Greenwood. He cleared the path on many occasions to break loose Cub runners to the secondary.

The freshmen line also played good ball in stopping the State running and passing attack. The opposition completed few passes and had two intercepted. Although a pre-game rain made ball handling treacherous,

## 1955 FRESHMAN RESULTS

Clemson 14 N. C. State 0

## 1955 FRESHMAN SCHEDULE

Oct. 8—Georgia Tech here, 8 p.m.  
 Oct. 19—South Carolina there, 8 p.m.  
 Oct. 28—Wake Forest at Canton, N. C., 8 p.m.  
 Nov. 11—Duke at Durham, N. C., 2 p.m.

the beef-up-front was hard to cope with on through-the-middle plays. State made most of its gains on end runs.

Coming up for praise in the line were Buck Grover, end, Brownville, Pa.; Earl Catoe, guard, Kershaw; Robert Gobble, guard, Spartanburg; Robert Snyder, center, New Castle, Del.; James Singleton, center, Pickens; and Ronnie Grace, tackle, McKeesport, Pa.

The Cubs drew first blood midway in the second quarter as Moseley dashed off his own left tackle on a quarterback sneak to score from 14 yards out. Hayes, in the fourth stanza, also bulled his way 14 yards for the second score. The Pickens speedster virtually bowled over three would-be tacklers in his scoring jaunt.

Both extra points failed, but the

Cubs picked up two more points with three minutes left in the game on a safety. Mike Duke punted dead on the State one-yard line, and after

State was penalized twice to the 18-inch line, Louis Olson of Decatur, Ga., tackled Don Hafer of State in the end zone for two points.

## 1955 CLEMSON FRESHMAN ROSTER

Ends	Ht.	Wt.	Age	Hometown
Douglas Daigneault	6-1	180	19	Malone, N. Y.
Leroy Edney	6-2	175	17	Avonmore, Pa.
Thomas Gressette	5-11	170	17	St. Matthews
Darwyn (Buck) Grover	6-4	212	18	Brownsville, Pa.
Bill Hecht	6-0	170	17	Clairton, Pa.
Lewis Jordan	6-0	170	18	St. George
Kenneth Lee	6-1	200	19	Heflin, Ala.
Joe Maccione	6-2	192	24	Milburn, N. J.
Ray Masneri	6-2	180	17	California, Pa.
Kenneth Rogers	6-5	195	17	Mullins
<b>Tackles</b>				
Jaudon Bragg	6-0	200	18	Port Wentworth, Ga.
Ronald Grace	6-2	200	17	McKeesport, Pa.
Furman Holland	6-4	220	18	Greeleyville
Donnie Meador	6-1	230	18	Atlanta, Ga.
Cecil Moser	6-1	212	20	Graham, N. C.
Stevie Richardson	6-1	200	19	Hawkinsville, Ga.
John Smith	6-4	210	17	Athens, Ga.
<b>Guards</b>				
Earl Catoe	6-1	195	19	Kershaw
Richard Curtis	5-10	190	18	Charleston
Wayne Gemas	5-11	185	18	Maxwell, Pa.
Robert Gobble	5-11	205	18	Spartanburg
Ronald Matenkoski	5-11	220	19	New Stanton, Pa.
Carl Matt	5-11	210	22	Jeannette, Pa.
Donald Lee Mills	6-0	190	18	Greensburg, Pa.
Pete O'Dillon	6-0	215	20	Shannon, Ga.
Louis Olson	5-10	195	19	Decatur, Ga.
Cabell Reese	6-0	165	21	Lynchburg, Va.
David E. Rowell	6-0	185	18	Lancaster
<b>Centers</b>				
Garfield Cobb	5-11	180	20	Toccoa, Ga.
John Cox	6-2	192	18	Alexandria, Va.
James Merchant	6-2	205	19	Charleston Heights
Jimmy Singleton	6-1	165	18	Pickens
Paul Snyder	6-0	207	19	New Castle, Del.
George Tupper	6-2	190	18	Summerville
<b>Quarterbacks</b>				
Larry Bagwell	6-1	180	18	Easley
Jack Cross	6-0	180	19	Manassas, Va.
Mike Duke	6-3	193	19	Atlanta, Ga.
Bob Goin	6-0	180	18	Verona, Pa.
Ted Moseley	6-1	160	18	Atlanta, Ga.
John Sova	5-11	180	19	Pottstown, Pa.
Walter Uhlig	6-1	172	17	Marysville, Pa.
<b>Halfbacks</b>				
Richard Beauchamp	6-2	195	20	Piercefield, N. Y.
John Cappa	5-10	173	19	Connellsville, Pa.
Holmes Garrett	5-9	170	18	Villa Rica, Ga.
Don Gilpin	5-9	160	21	Connellsville, Pa.
Martin Gwinn	6-0	175	19	Joanna
Rudolph Hayes	6-0	215	20	Pickens
Ronald Kite	5-10	170	17	Lake Butler, Fla.
Tommy McTeer	5-10	163	18	Hampton
Eric Philpott	5-10	170	17	New Orleans, La.
John Rosa	5-11	190	17	Avonmore, Pa.
Larry Rudin	5-10	160	19	Atlanta, Ga.
Russell Spivey	5-11	170	18	Conley, Ga.
Horace Turbeville	5-9	180	20	Camden
<b>Fullbacks</b>				
Clarence (Butch) Coker	6-0	200	18	Turbeville
Hal Knott	5-11	185	18	Henderson, N. C.
Floyd Lawrence	6-0	205	18	Saltville, Va.
Franklin Lawrence	6-0	205	19	Saltville, Va.
James Stevens	6-0	200	19	Greenwood



**CLEMSON'S BOWL RECORD  
IS BEST IN THE A.C.C.**

1940 COTTON BOWL CHAMPIONSHIP

1949 GATOR BOWL CHAMPIONSHIP

1951 ORANGE BOWL CHAMPIONSHIP

1952 GATOR BOWL LOSER



**BECAUSE . . .**

**CLEMSON'S IPTAY'S (I Pay Ten A Year) ARE BEST IN THE A.C.C.**

.....  
**PAVE THE WAY WITH IPTAY**

**YOU WILL BE HELPING**

**Deserving Boys Through Clemson**—More than 750 have already been educated with IPTAY dollars  
**Clemson Athletic Teams to Win**—They compete in the powerful Atlantic Coast Conference  
**Yourself to Benefits Every Clemson Supporter Wants**—This includes self-satisfaction

**YOU SHOULD KNOW THAT**

**100 Cents of Every IPTAY Dollar are Used for Scholarships**—It's not a "slush" fund  
**IPTAY Is Wholeheartedly Supported by The Clemson Administration**—As a club & scholarship fund  
**IPTAY Is Credited with Three Bowl Titles**—Best record in the Atlantic Coast Conference

**YOU WILL RECEIVE**

**Full Reports of All Clemson Athletic Events**—Including 16 or more publications yearly  
**First Call on Tickets to All Clemson Games**—Including the State Fair, bowls and tournaments  
**The Right to Deduct Your Contribution for Tax Purposes**—Be it \$10 or \$100

# Modern Tiger Leaders . . .

## CLEMSON SCORING LEADERS . . .

	TD's	F. G.	Ex. Pt.	Total
1935—Mac Folger, FB	6	0	0	36
1936—Mac Folger, FB	8	0	0	48
1937—Red Pearson, BB	3	1	8	29
1938—Banks McFadden, TB	5	0	0	30
—Shad Bryant, WB	5	0	0	30
1939—Shad Bryant, WB	4	0	8	32
1940—Aubrey Rion, WB	4	0	4	28
1941—Charlie Timmons, FB	9	0	23	77
1942—Marion Butler, TB	6	0	0	36
1943—James Whitmire, TB	4	0	0	24
1944—Bill Rogers, FB	6	0	1	37
1945—Jim Reynolds, FB	5	0	0	30
—Marion Butler, TB	5	0	0	30
1946—Dutch Leverman, TB	4	0	0	24
—Chip Clark, LE	4	0	0	24
1947—Jim Reynolds, WB	8	0	0	48
1948—Ray Mathews, WB	13	0	0	78
1949—Fred Cone, FB	9	0	1	55
1950—Fred Cone, FB	15	0	2	92
1951—Glenn Smith, LE	7	0	0	42
1952—Don King, TB	3	0	0	18
—Billy Hair, TB	3	0	0	18
—Red Whitten, FB	3	0	0	18
—Buck George, WB	3	0	0	18
1953—Dreher Gaskin, LE	5	0	0	30
1954—Jim Coleman, RHB	5	0	1	31

## CLEMSON RUSHING LEADERS . . .

	Att.	Gain	Avg.
1935—Joe Berry, TB	99	457	4.5
1936—Mac Folger, FB	144	522	3.6
1937—Don Willis, FB	99	329	3.3
1938—Don Willis, FB	103	483	4.7
1939—Charlie Timmons, FB	146	556	3.8
1940—Chippy Maness, TB	86	472	5.4
1941—Charlie Timmons, FB	149	635	4.3
1942—Marion Butler, TB	145	616	4.2
1943—James Whitmire, WB	72	376	5.2
1944—Sid Tinsley, TB	126	479	3.8
1945—Dewey Quinn, FB	89	392	4.4
1946—Bobby Gage, TB	58	264	4.5
1947—Bobby Gage, TB	114	502	4.4
1948—Ray Mathews, WB	113	646	5.7
1949—Ray Mathews, WB	118	728	6.0
1950—Fred Cone, FB	184	845	4.6
1951—Billy Hair, TB	160	698	4.4
1952—Red Whitten, FB	115	445	4.0
1953—Don King, QB	79	243	3.1
1954—Joel Wells, LHB	74	352	4.8

## CLEMSON PASSING LEADERS . . .

	Att.	Com.	I.	Gain
1935—Joe Berry, TB	72	42	7	422
1936—Joe Berry, TB	99	32	10	434
1937—Bob Bailey, TB	88	35	14	579
1938—Bob Bailey, TB	35	18	3	272
1939—Banks McFadden, TB	70	31	6	581
1940—Chippy Maness, TB	61	19	5	388
1941—"Booty" Payne, TB	90	35	4	582
1942—Marion Butler, TB	90	38	9	504
1943—Marion Butler, TB	34	12	1	166
1944—Sid Tinsley, TB	51	11	9	248
1945—Marion Butler, TB	45	11	6	239
1946—Dutch Leverman, TB	62	26	7	501
1947—Bobby Gage, TB	109	47	13	1002
1948—Bobby Gage, TB	105	42	10	799
1949—Ray Mathews, WB	72	24	6	487
1950—Billy Hair, TB	71	29	6	644
1951—Billy Hair, TB	164	67	12	1004
1952—Don King, TB	69	23	10	317
1953—Don King, QB	98	46	11	706
1954—Don King, QB	72	32	9	468

DESIGN — ENGINEERING — CONSTRUCTION

Complete

**SWIMMING POOLS**

PRIVATE — CLUB — MOTEL — MUNICIPAL

— Call or Write —

**BEESON-FINNEY Co.**

Phone 5331

Liberty, S. C

**King's Laundry &  
Dry Cleaners Inc.**

"Clothes Lines are for the Birds"

Clothes Best Friend are your Cleaners  
and Laundry. Why Not Try Us?

Phone 5135

Clemson, S. C.

**EAGLE**

**Furniture Company**

"Your Best Bet For a Bargain"

A COMPLETE LINE OF HOME  
FURNISHINGS AND THE  
COMPLETE LINE OF  
WESTINGHOUSE APPLIANCES

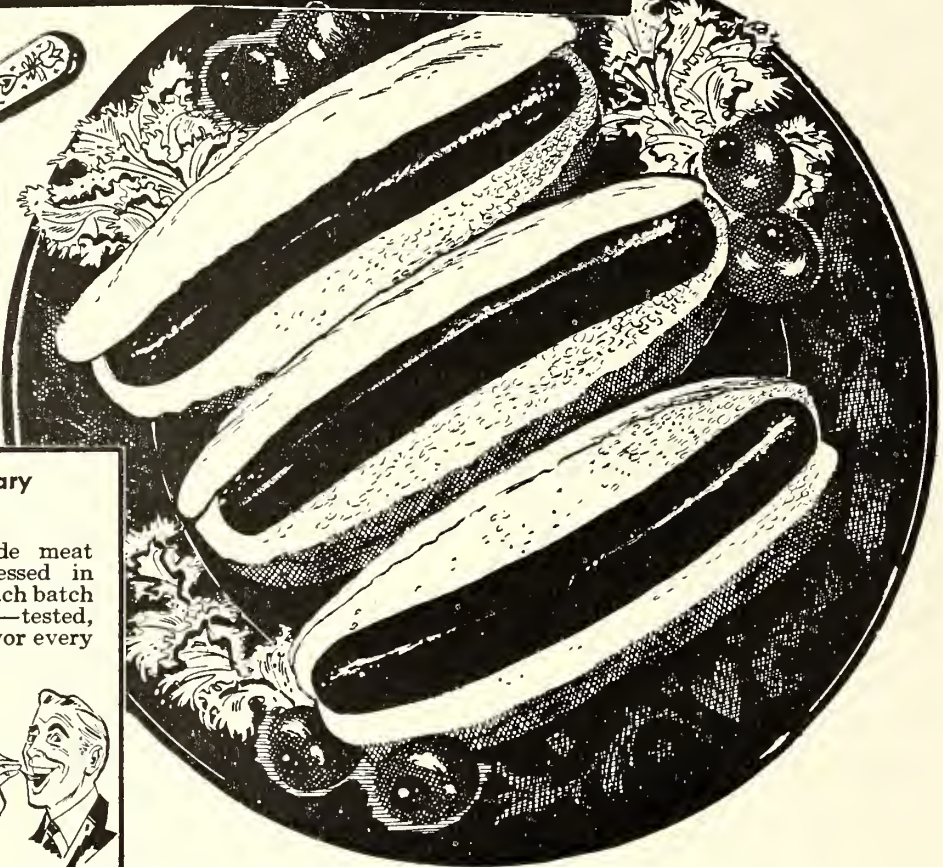
Also

Williamston, S. C.

On the Square and  
Anderson, S. C. Union, S. C.



# BEST BET every time



### The 3 T's that never vary

#### Taste



Carolina's Pride meat products processed in *small batches*, each batch carefully tasted—tested, insures fine flavor every time.

#### Tenderness

Only choice, young, grain-fed porkers are selected to insure greater tenderness. Each small batch is rigidly tested before going to market.



#### Texture

Just as in the cakes you bake, no meat product can be a real treat without fine texture. Each small batch must pass our strict texture tests before it is labeled Carolina's Pride.



### DOUBLE YOUR MONEY BACK

Each time you buy a Carolina's Pride product, *you must be completely satisfied*. If and when we fail you, tear the label from the wrapper and mail it to us with a short letter telling us what you paid and why you are not satisfied. We'll send you **DOUBLE** your purchase price promptly. Carolina's Pride, Greenwood, S.C.

You're sure of satisfaction—every time when your choice of franks is Carolina's Pride

These popular Southern Franks, you see, are *not* mass-produced for the national market. Carolina's Pride Franks are processed right here in South Carolina—in *small batches*—which permits rigid control at every step.

What's more, the porkers are not a hodgepodge of all kinds of breeds from all over—each select pig is a special type, grain fed, and graded U.S. No. 1. The result is *uniformity*—always the same tempting flavor, always the same tender, lean meat.

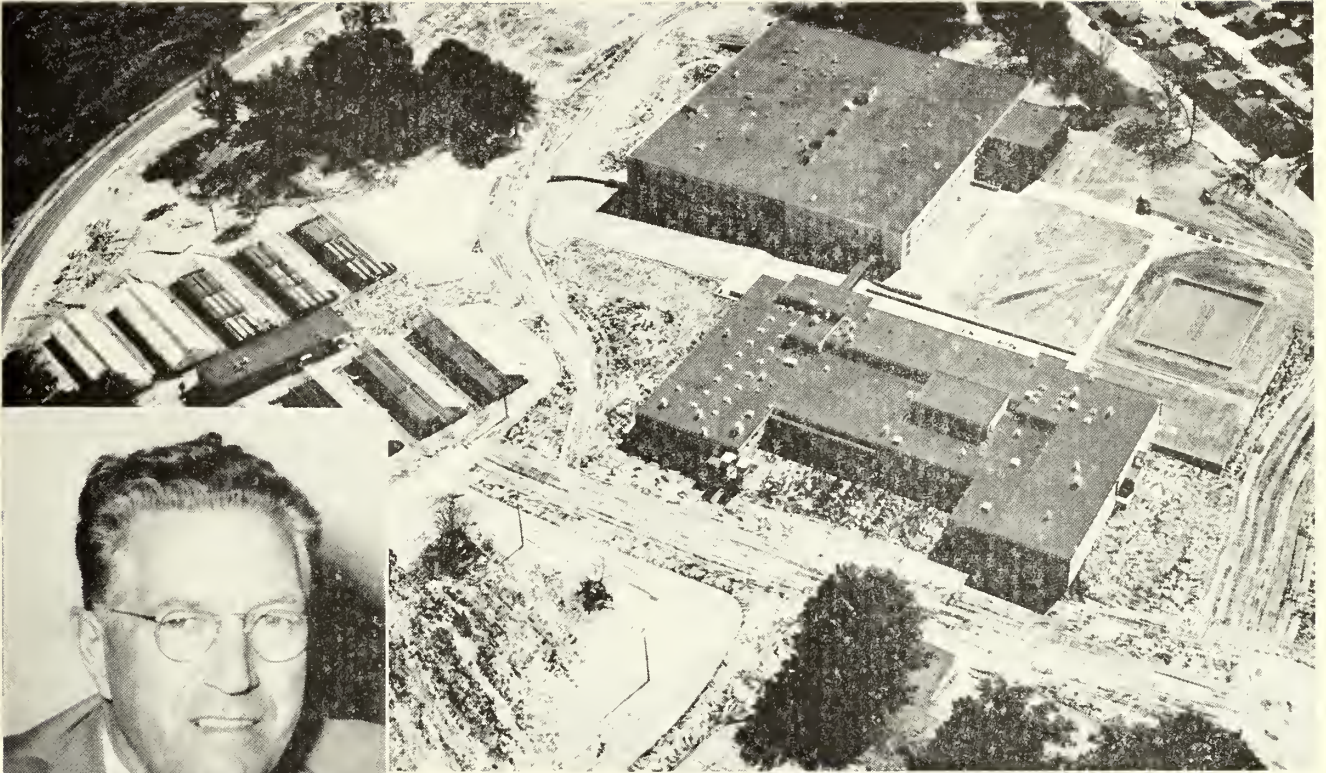
That's our promise. If and when we fail you, tell us— and get your money back **DOUBLE**.

Try Carolina's Pride Sausage • Ham • Bacon • Little Links • Cold Meats

Greenwood Packing Company  
Greenwood, S. C.

## Carolina's Pride Meats





**CLEMSON'S NEW AG. CENTER**

DR. M. D. FARRAR, *Dean  
Clemson School of Agriculture*

**Central Hardware Co.**  
CENTRAL, S. C.

Complete Line of  
Kelvinator Appliances

ZENITH T.V.

RANGES                  DEEP FREEZE

REFRIGERATORS        WASHERS



Complete Line of  
Garden Tools and Seeds



GAS HEATERS & RANGES

Compliments of

**DIXIE-HOME STORES**

Where You Get

**THE BEST FOR LESS . . . PLUS  
S & H GREEN STAMPS**

**THE HOUSE OF QUALITY**

Serving South Carolina Businesses  
and Schools Since 1844

**The R. L. Bryan Company**

1440 MAIN STREET

COLUMBIA, SOUTH CAROLINA



Compliments of

**W. C. BEATY**

**Oliver Sales & Service**

"The Finest in Farm Machinery"

Seneca, S. C.

Phone 308

### Clemson Service Station

Seneca  
Road

**Esso**

Phone  
9111

COMPLETE SERVICE

RECAPS

We Appreciate Your Patronage

RUFE

JACK

**CHRYSLER**

**PLYMOUTH**

GIVE YOURSELF A TREAT  
STOP AT

### Ballenger-Price Motors

IN SENECA

DRIVE THE NEW 1956  
CHRYSLERS AND PLYMOUTH

You Will Find a Car For Every  
Purpose, And To Fit Every Purse

You Will Find The Most Honestly Priced  
And Conditioned Used Cars To  
Be Found Anywhere

You Won't Find Any "Gimmicks"

Only Honest Values and Honest  
People — Give Them A Try

**Ballenger-Price Motors**

SENECA, S. C.

PHONE 430

## '54 Player Statistics . . .

RUSHING	Att.	Gain	Lost	Net	Avg.
Wells, lh	74	383	31	352	4.8
O'Dell, fb	77	314	22	292	3.8
*George, lh	45	288	6	282	6.3
Pagliei, rh	65	287	33	254	3.9
Ankuta, fb	42	232	0	232	5.5
Coleman, rh	36	180	8	172	4.8
*Moore, rh	9	160	0	160	17.8
Hankinson, fb	26	128	2	126	4.8
*Whitten, fb	12	54	0	54	4.5
King, qb	48	191	137	54	1.1
Griffith, fb	10	53	0	53	5.3
Bussey, qb	41	119	78	41	1.0
*Ross, qb	14	35	4	31	2.2
McLendon, rh	1	3	0	3	3.0
*Williams, qb	5	11	19	-8	-1.6
*Parades, qb	1	0	17	-17	-17.0

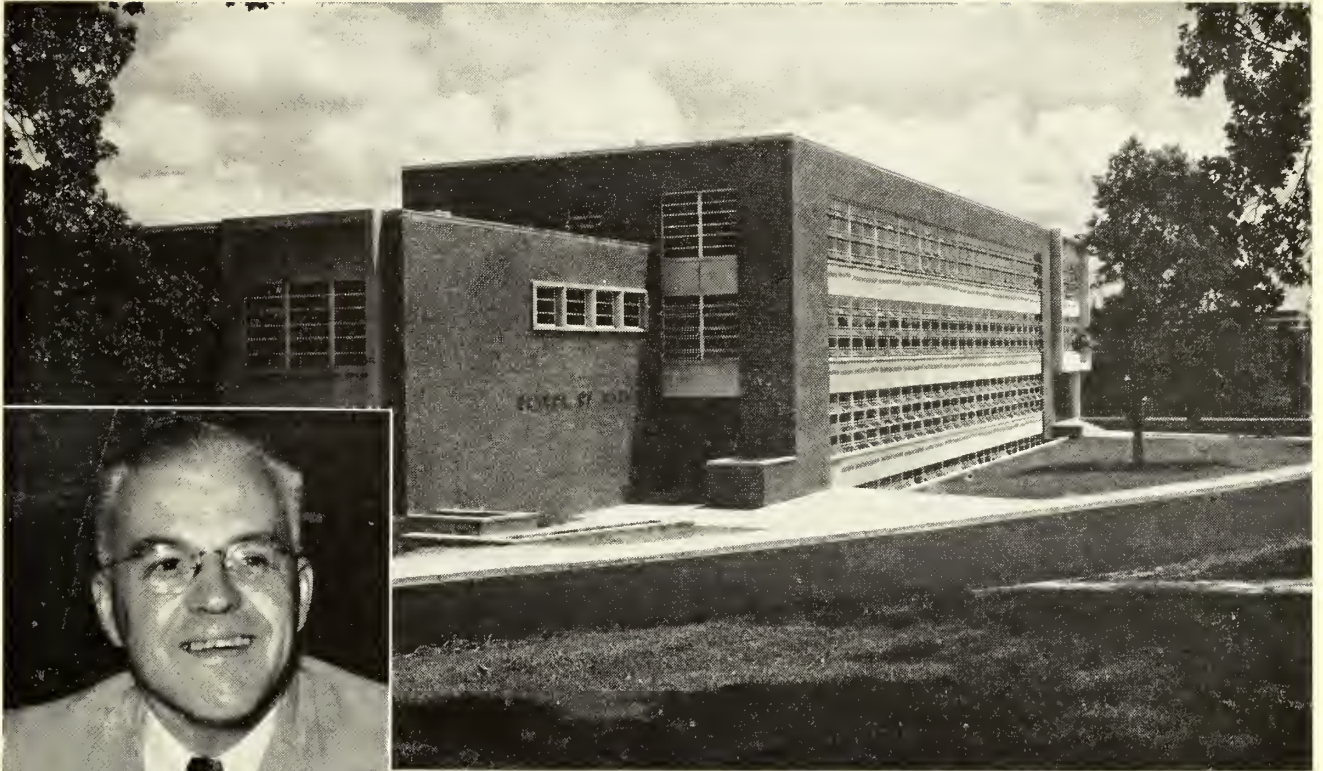
PASSING	Att.	Com.	I	TD	Yds.	Pct.
King, qb	72	32	9	4	468	44.4
Bussey, qb	22	6	2	0	155	28.1
Wells, lh	4	2	0	1	115	50.0
*Parades, qb	3	2	0	0	46	66.7
*Williams, qb	6	2	0	0	51	33.3
*Ross, qb	2	0	0	0	0	00.0
Pagliei, rh	1	0	0	0	0	00.0

RECEIVING	No.	Yds.	TD	Avg.
*Jackson, re	11	151	2	13.7
Pagliei, rh	7	202	1	28.9
Laraway, le	7	112	1	16.0
*Hicks, le	6	165	1	27.5
Coleman, rh	4	49	0	12.3
Wells, lh	3	34	0	11.3
*Ross, lh	1	39	0	39.0
Carlton, re	1	35	0	35.0
*Moore, rh	1	28	0	28.0
Wall, le	1	11	0	11.0
Griffith, fb	1	5	0	5.0
Smith, re	1	4	0	4.0

SCORING	TD	EPA	EPM	Pts.
Coleman, rh	5	1	1	31
Pagliei, rh	4	1	1	25
Laraway, le	3	0	0	18
*Moore, rh	3	1	0	18
Wells, rh	3	0	0	18
King, qb	2	4	2	14
*Jackson, re	2	0	0	12
*George, rh	2	0	0	12
*Parades, qb	0	16	11	11
*Whitten, fb	1	0	0	6
*Hicks, le	1	0	0	6
*Williams, qb	1	0	0	6
Ankuta, fb	1	0	0	6
Bussey, qb	1	0	0	6
Smith, re	0	0	0	**2
*White, lt	0	0	0	**2

PUNTING	No.	Yds.	HB	Avg.
Pagliei, rh	26	955	0	36.7
Coleman, rh	7	255	0	36.4
King, qb	3	105	0	35.0
Bussey, qb	1	38	0	38.0

\* not returning.  
\*\* tackled opponents for safeties.



**THE CHEMISTRY BUILDING**

DR. H. L. HUNTER, *Dean*  
*Clemson School of Arts and Sciences*

Refreshes Without Filling . . .



**TERRY BOTTLING CO., ANDERSON, S. C.**



# All-Time Greats . . .

## 1954 ALL-OPPONENTS

LE—Jim Pyburn, Auburn, senior  
 LT—Bob Bartholomew, Wake Forest, junior  
 LG—Frank Mineevieh, South Carolina, senior  
   C—John Irvine, Maryland, senior  
 RG—Bob Pellegrini, Maryland, junior  
 RT—Ross Winne, Florida, senior  
 RE—Ed Stowers, Wake Forest, senior  
 QB—Mackie Priekett, South Carolina, sophomore  
 LH—Ronnie Waller, Maryland, senior  
 RH—Hoppy Middleton, Auburn, senior  
 FB—Joe Childress, Auburn, junior

## CLEMSON'S ALL-AMERICANS

1929 ----- Banks McFadden, tailback  
 1940 ----- Joe Blalock, end  
 1941 ----- Joe Blalock, end  
 1948 ----- Bobby Gage, safety  
 1950 ----- Jackie Calvert, safety

## CLEMSON BOWL RECORD

1940 Cotton Bowl—Clemson 6 Boston College 3  
 1949 Gator Bowl—Clemson 24 Missouri 23  
 1951 Orange Bowl—Clemson 15 Miami 14  
 1952 Gator Bowl—Clemson 0 Miami 14

## PLAYERS BY STATES

South Carolina 27	New York 2
Georgia 11	Tennessee 1
Pennsylvania 8	West Virginia 1
North Carolina 4	Canada 1

## PRONUNCIATION

Neuf Ankuta — Nuff An - coo' - tuh  
 DeSimone — Di - Si' - mon  
 Grijan — Gurd' - jan  
 Inabinet — In - ab' - net  
 Marazza — Ma - razz' - uh  
 Paglici — Pag' - lee - eye

## 1931-1954 ALL-CLEMSON

LE—Glenn Smith, 1949-50-51  
 LT—George Fritts, 1939-40-41  
 LG—Frank Gillespie, 1946-47-48  
   C—Charlie Woods, 1936-37-38  
 RG—Ray Clanton, 1945-46-47-48  
 RT—Phil Prince, 1944-46-47-48  
 RE—Joe Blalock, 1939-40-41  
 BB—“Red” Pearson, 1936-37-38  
 WB—Ray Mathews, 1947-48-49-50  
 TB—Banks McFadden, 1937-38-39  
 FB—Fred Cone, 1948-49-50

## CLEMSON'S PROS OF 1955

Fred Cone—Green Bay fullback (fifth year)  
 Bob Hudson—Philadelphia end (fifth year)  
 Ray Mathews—Pittsburgh halfback (fifth year)

Registered Jewelers    American Gem Society

FINE DIAMONDS    WATCHES  
 STERLING SILVER    CHINA  
 “WHAT WE SAY IT IS, IT IS”

**H A L E ' S**

Leading Jewelers and Diamond Merchants  
 Since 1856

GREENVILLE, SOUTH CAROLINA

**Morris & Company**

**WHOLESALE GROCERS**

Serving Independent Retail  
 Merchants in the Piedmont Section

**Morris & Company**

**PICKENS, SOUTH CAROLINA**

**THE SHIRTMAS-  
 TERY COMPANY**

INCORPORATED



Manufacturers of  
**QUALITY SPORTS SHIRTS  
 AND DRESS SHIRTS**  
 which are sold all over the country



Factories located in  
**ABBEVILLE, SOUTH CAROLINA**  
 and  
**ANDERSON, SOUTH CAROLINA**



THE EDUCATION BUILDING

MR. W. H. WASHINGTON, *Dean  
Clemson School of Education*

WHEN IN COLUMBIA STOP AT  
J. O. "CHINK" FREEMAN'S

Gervais and Huger  
Phone 4-9102

Esso Service

COLUMBIA,  
S. C.



"WE KEEP 'EM ROLLING

ROAD SERVICE



# Individual Records . . .

## INDIVIDUAL — GAME

- Most TD's, 4 (Fred Cone vs Auburn, 1950)
- Most TD passes, 4 (Bobby Gage vs Auburn, 1947)
- Most TD's run and pass, 5 (Bobby Gage vs Auburn, 1947)
- Most TD passes caught, 3 (Dreher Gaskin vs Auburn, 1953)
- Most yards rushing, 234 (Don King vs Fordham, 1952)
- Best rushing average, 30.4 (Ken Moore netted 152 yards in 5 tries vs. The Citadel, 1954)
- Most pass completions, 15 (Billy Hair vs Auburn, 1951)
- Most yards passing, 245 (Bobby Gage vs Furman, 1947)
- Most offensive plays, 45 (Billy Hair vs Auburn, 1951)
- Most yards run and pass, 374 (Bobby Gage vs Auburn, 1947)
- Most passes caught, 10 (Henry Walker vs Auburn, 1947)
- Most yards pass receiving, 148 (Henry Walker vs Auburn, 1947)
- Best punting average, 45 yards (Banks McFadden for 10 punts vs Wake Forest, 1939)
- Most yards punt returns, 101 (Bobby Gage in 3 tries vs N. C. State, 1943)

## INDIVIDUAL — SEASON

- Most TD's, 15 (Fred Cone, 1950)
- Most TD passes, 11 (Bobby Gage, 1948)
- Most TD's run and pass, 17 (Bobby Gage, 1947)
- Most TD passes caught, 7 (Glenn Smith, 1951)
- Most extra points, 38 (Jack Miller, 1948)
- Most yards rushing, 845 (Fred Cone, 1950)
- Best rushing average, 7.2 yards (Billy Poe netted 380 yards in 53 tries in 1945)
- Most pass completions, 67 (Billy Hair, 1951)
- Most yards passing, 1004 (Billy Hair, 1951)
- Most yards run and pass, 1702 (Billy Hair, 1951)
- Most passes caught, 39 (Glenn Smith, 1951)
- Most yards pass receiving, 632 (Glenn Smith, 1951)
- Most passes intercepted by, 7 (Fred Knoebel, 1951)
- Best punting average, 43.5 (Banks McFadden for 65 punts, 1939)
- Most yards punt returns, 487 (Shad Bryant in 27 tries, 1938)

## INDIVIDUAL — CAREER

- Most TD's 31 (Fred Cone, 1948-49-50)
- Most TD passes, 24 (Bobby Gage, 1945-46-47-48)
- Most TD's run and pass, 40 (Ray Mathews, 1947-48-49-50)
- Most TD passes caught, 18 (Glenn Smith, 1949-50-51)
- Most extra points, 70 (Charley Radcliff, 1950-51-52)
- Most yards rushing, 2,172 (Fred Cone, 1948-49-50)
- Best rushing average, 5.92 yards (Ray Mathews netted 1899 yards in 321 tries, 1947-48-49-50)
- Most pass completions, 123 (Bobby Gage, 1945-46-47-48)
- Most yards passing, 2448 (Bobby Gage, 1945-46-47-48)
- Most yards run and pass, 3757 (Bobby Gage, 1945-46-47-48)
- Most passes caught, 93 (Glenn Smith, 1949-50-51)
- Most yards pass receiving, 1641 (Glenn Smith, 1949-50-51)
- Most passes intercepted by, 15 (Fred Knoebel, 1950-51-52)
- Best punting average, 42.2 yards (Banks McFadden for 104 punts, 1937-38-39)
- Most yards punt returns, 779 (Shad Bryant, 1937-38-39)

## KEYS PRINTING COMPANY

Established 1869

86 YEARS OF SERVICE

PRINTING RULING BINDING  
LITHOGRAPHING ENGRAVING

Telephone 2-5301

GREENVILLE, SOUTH CAROLINA

## BUICK — CHEVROLET

SALES — SERVICE

Clayton Chevrolet Co.

Phone 523

Seneca, S. C.

JOIN I P T A Y

and see

HOKE SLOAN

An Old Clemson Man

Selling Gent's Furnishings

to Clemson Men at the Right Price

CLEMSON

SOUTH CAROLINA

Sullivan Hardware Co.

ANDERSON, S. C.

SPORTING GOODS — FARM IMPLEMENTS

HOUSEHOLD WARE — GIFTS

Serving This Section 70 Years



**RIGGS HALL — ENGINEERING BUILDING**

*DR. J. H. SAMS, Dean  
Clemson School of Engineering*

## **Carolina Broadcasters, Inc.**

Four Times As Much Power

**ANDERSON, S. C.**

Dear Mr. Businessman:

Of course it's too late to get your sales message on the broadcast of this ball game. But if you could, it would sell a lot of your merchandise, because you can bet your life there are thousands listening in—in the rich WANS area.

But Clemson football is only one of the many interesting and entertaining programs broadcast by WANS. Your message on any one of them will produce results.

Ask our friendly representatives about choice availabilities at the lowest cost per thousand.

Yours very truly,

**WANS** 1280 kc.

STOP IN AT  
**PETE'S DRIVE-IN No. 5**  
FOR A DELICIOUS SNACK  
BEFORE AND AFTER THE GAME

LOCATED AT  
EAST RIVER STREET  
AND HIGHWAY 29 BY-PASS  
IN ANDERSON



WHILE IN GREENVILLE  
STOP BY THE OTHER  
**Pete's Nos. 1, 2, 3 or 4**





The Chiquola Manufacturing Company was founded in 1902. Through constant adoption of new ideas, new methods and modern machinery it has continued to grow and play an important part in the industrial progress of South Carolina.

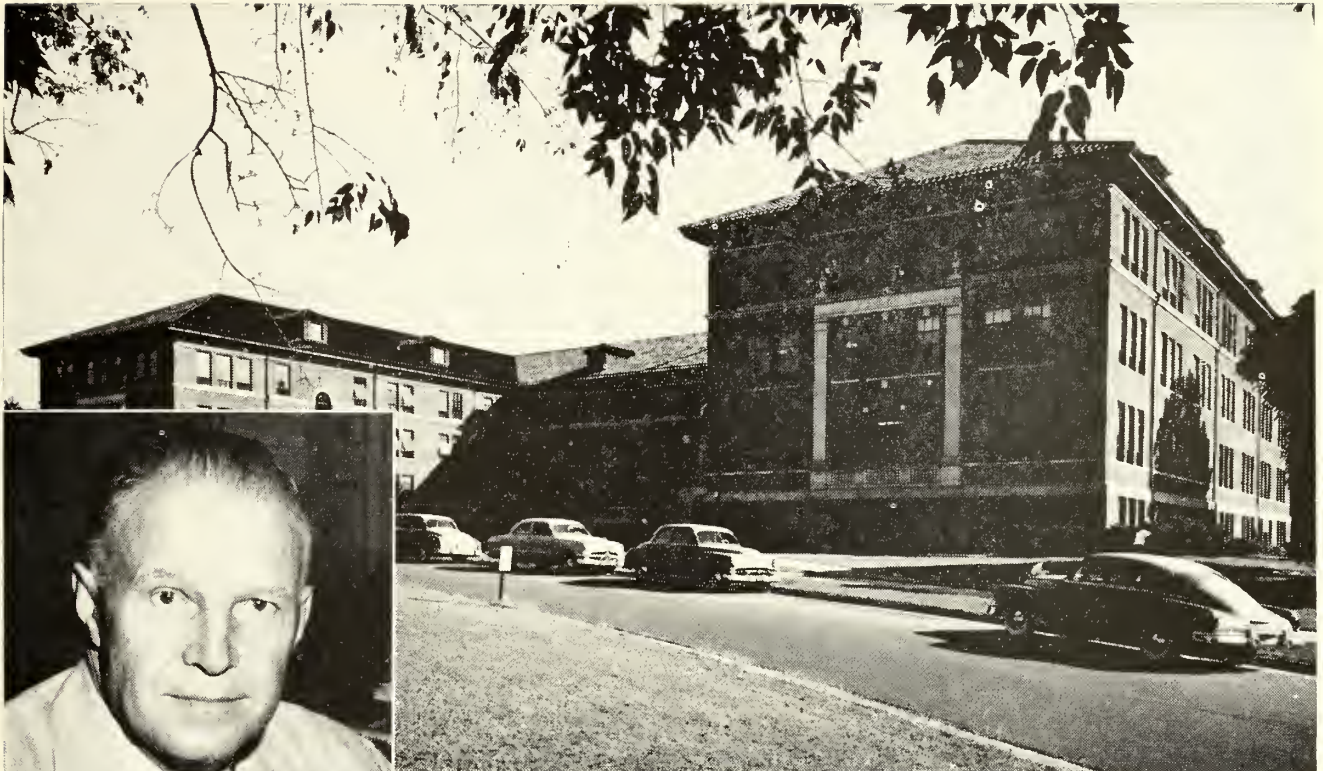
During this long period of successful operation under the same management, Chiquola has produced more than ONE BILLION YARDS of cotton fabrics; it has purchased more than FIFTY-SIX MILLION DOLLARS worth of cotton from the farmers of the South; it has paid MILLIONS of dollars in taxes to the City, County, State, and Federal Governments; it has donated thousands of dollars to schools, churches, orphanages, and charitable organizations; and last but not least, it has paid more than THIRTY MILLION dollars in wages to the hundreds of fine people who have been on its payroll over the years.

Former CLEMSON MEN occupy important positions in our management and we are fully cognizant of the important part this outstanding institution is playing in the development of the South through the education of our leaders of tomorrow.

When autumn leaves are falling and the strains of Tiger Rag resound from the hills of the Blue Ridge, we lend our voice to the plaudits of the multitude with that old familiar refrain, "GO - TIGERS - GO."

## **CHIQUOLA MANUFACTURING COMPANY**

**HONEA PATH, SOUTH CAROLINA**



**THE TEXTILE BUILDING**

DR. H. M. BROWN, *Dean*  
Clemson School of Textiles

**"WE BELIEVE IN  
YOUR JUDGMENT"**



**ICE CREAM and MILK**

**COMPARE PET WITH ANY OTHER**

**CLEMSON SODA SHOP  
& BUS STATION**

1:30 to 5:00 O'Clock on Sunday  
7:00 a.m. to 8:30 p.m. Weekly

Fishing Equipment Pipes

REVERE and EASTMAN  
Motion Picture Machines

Sandwiches & Fountain Service

Compliments of

**DIXIE CLEANERS**

Across From Post Office

ALTERATIONS—CLEANING & PRESSING

Cleaning by Miracle "Nu-Pro"

Phone 6181

Clemson, S. C.



## Against All Comers . . .

Against	Played	Won	Lost	Tied	Pts.	Op. Pts.
South Carolina	52	29	20	3	803	479
Furman	39	25	10	4	708	297
Auburn	27	12	23	2	320	609
Presbyterian	26	29	3	4	1010	132
Georgia	20	8	19	2	299	474
N. C. State	28	20	7	1	321	145
Georgia Tech	23	8	20	0	307	595
Citadel	23	22	5	1	474	107
Davidson	20	11	5	4	239	125
Wake Forest	20	12	8	0	331	228
Tennessee	15	5	8	2	80	179
V. M. I.	12	5	5	2	194	123
V. P. I.	12	5	6	1	139	141
Wofford	11	8	3	0	184	53
Florida	11	3	8	0	127	272
Boston College	10	7	3	0	219	183
Alabama	9	3	6	0	85	202
Erskine	8	7	1	0	241	19
Mercer	7	4	2	1	125	36
Tulane	7	2	5	0	107	147
Kentucky	6	1	5	0	46	114
Newberry	6	6	0	0	288	7
Geo. Washington	5	3	1	1	59	13
U. N. C.	5	0	2	3	50	64
Duquesne U.	4	4	0	0	162	53
Gordon	4	4	0	0	72	0
Miami (Fla.)	4	1	3	0	28	74
Centre	3	0	3	0	7	63
Duke	3	0	3	0	18	83
Howard	3	3	0	0	98	0
Maryland	3	0	3	0	0	64
Southwestern	2	1	0	1	33	18
Mississippi	2	0	2	0	7	39
Mississippi State	2	1	0	1	28	14
Missouri	2	2	0	0	58	23
Rice	2	1	1	0	27	47
Vanderbilt	2	0	2	0	0	82
Army	1	0	1	0	6	21
Bingham	1	1	0	0	55	0
Camp Hancock	1	0	1	0	13	66
Camp Sevier	1	1	0	0	65	0
Charlotte "Y"	1	1	0	0	10	0
Col. of Pacific	1	0	1	0	7	21
Cumberland	1	0	0	1	11	11
Elon	1	1	0	0	6	0
Fordham	1	0	0	1	12	12
Georgia Pre-Flight	1	0	1	0	6	32
Guilford	1	1	0	0	122	0
Jacksonville NAS	1	0	1	0	6	24
Maryville	1	1	0	0	35	0
Navy	1	1	0	0	15	7
Oglethorpe	1	0	1	0	0	12
Pensacola NAS	1	1	0	0	7	6
Port Royal	1	1	0	0	19	0
Riverside	1	1	0	0	26	0
Sewanee	1	0	1	0	5	11
Villanova	1	0	1	0	7	14

## Poinsett Lumber & Manufacturing Company

Pearman Dairy Road

ANDERSON, S. C.

Makers of the amazing  
new slant-needle

**SINGER\*** sewing machine.

\* A trade mark of The Singer Manufacturing Company

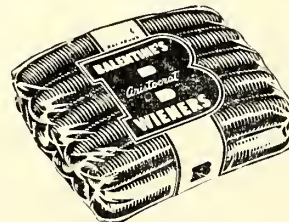
## COMPLIMENTS OF CAMPUS ESSO STATION

MARTIN BROS., Owners

Phone 9126      Clemson, S. C.

Forks of Highways 123 & 78

Clean Rest Rooms      Public Phone



Enjoy the  
Best!

Enjoy **BALENTINE'S**

The package with the BIG BLACK "B"

# Through the Years . . .

Year	W	L	T	Pts.	Op. Pts.	Captain	Coach
1896	2	1	0	26	18	R. Hamilton	W. Williams
1897	2	2	0	28	58	W. T. Brock	W. Williams
1898	3	1	0	110	20	A. B. Shealy	J. A. Penton
1899	4	2	0	108	50	J. N. Walker	W. M. Riggs
1900	6	0	0	222	10	J. N. Walker	J. W. Heisman
1901	3	1	1	190	38	C. Douthit	J. W. Heisman
1902	6	1	0	152	17	Hope Sadler	J. W. Heisman
1903	4	1	1	167	22	No record	J. W. Heisman
1904	3	3	0	39	34	No record	E. B. Cochems
1905	3	2	1	76	63	F. M. Furtick	E. B. Cochems
1906	4	0	3	38	4	J. McLaurin	Bob Williams
1907	4	4	0	67	45	C. M. Robbs	F. Shaughnessy
1908	1	5	0	26	96	S. Coles	J. N. Stone
1909	5	3	0	88	43	J. E. Kirby	Bob Williams
1910	4	3	1	106	54	W. H. Hanckel	Frank Dobson
1911	3	5	0	71	109	P. L. Bissell	Frank Dobson
1912	4	4	0	179	126	W. B. Britt	Frank Dobson
1913	4	4	0	112	98	A. P. Gandy	Bob Williams
1914	5	3	1	167	125	W. Schilleter	Bob Williams
1915	2	4	2	113	48	W. K. McGil	Bob Williams
1916	3	6	0	81	147	C. S. Major	Bill Hart
1917	6	2	0	183	64	F. L. Witsell	E. A. Donahue
1918	5	2	0	198	101	B. C. Banks	E. A. Donahue
1919	6	2	2	151	55	B. C. Banks	E. A. Donahue
1920	4	5	1	65	121	F. Armstrong	E. A. Donahue
1921	1	6	2	55	187	J. Spearman	E. J. Stewart
1922	5	4	0	171	109	E. J. Emanuel	E. J. Stewart
1923	5	3	1	91	77	R. F. Holahan	Bud Saunders
1924	2	6	0	26	96	G. A. Robinson	Bud Saunders
1925	1	7	0	18	160	G. I. Finklea	Bud Saunders
1926	2	7	0	13	169	B. C. Harvey	Cul Richards
1927	5	3	1	74	84	H. L. Eskew	Josh Cody
1928	8	3	0	172	78	O. K. Pressley	Josh Cody
1929	8	3	0	168	110	O. D. Padgett	Josh Cody
1930	8	2	0	211	82	J. H. Justus	Josh Cody
1931	1	6	2	19	164	A. D. Fordham	Jess Neely
1932	3	5	1	89	111	R. T. Miller	Jess Neely
1933	3	5	3	50	85	J. Heinemann	Jess Neely
1934	5	4	0	90	85	J. H. Woodward	Jess Neely
1935	6	3	0	122	99	H. T. Shore	Jess Neely
1936	5	5	0	98	95	J. N. Berry	Jess Neely
1937	4	4	1	128	64	H. D. Lewis	Jess Neely
1938	7	1	1	119	56	Chas. Woods	Jess Neely
1939	9	1	0	165	45	J. E. Payne	Jess Neely
1940	6	2	1	156	73	R. G. Sharpe	Frank Howard
1941	7	2	0	233	91	W. H. Padgett	Frank Howard
1942	3	6	1	100	148	C. E. Wright	Frank Howard
1943	2	6	0	94	185	Ralph Jenkins	Frank Howard
1944	4	5	0	165	179	Ralph Jenkins	Frank Howard
1945	6	3	1	211	73	Ralph Jenkins	Frank Howard
1946	4	5	0	147	174	W. D. Clark	Frank Howard
1947	4	5	0	207	146	Cary Cox	Frank Howard
1948	11	0	0	187	55	R. A. Martin Phil Prince	Frank Howard
1949	4	4	2	122	114	E. T. Moore	Frank Howard
1950	9	0	1	262	50	Fred Cone	Frank Howard
1951	7	3	0	102	51	Bob Patton	Frank Howard
1952	2	6	1	112	157	Geo. Rodgers Billy Hair	Frank Howard
1953	3	5	1	140	172	Dreher Gaskin N. Gressette	Frank Howard
1954	5	5	0	193	121	Clyde White Buck George Scott Jackson Mark Kane	Frank Howard

## Pendleton Motor Company

SALES

SERVICE

All Makes & Models

Wrecker Service

Phone 2361

Night 2952

PENDLETON, S. C.

## EASLEY BANK

PENDLETON BRANCH

PENDLETON, S. C.



A friendly bank in a friendly community

## CLEMSON MEN! SHOP AT



Clemson - 6993 -- Seneca - 583

Home of

MANHATTAN

MICHAELS-STERN

JANTZEN

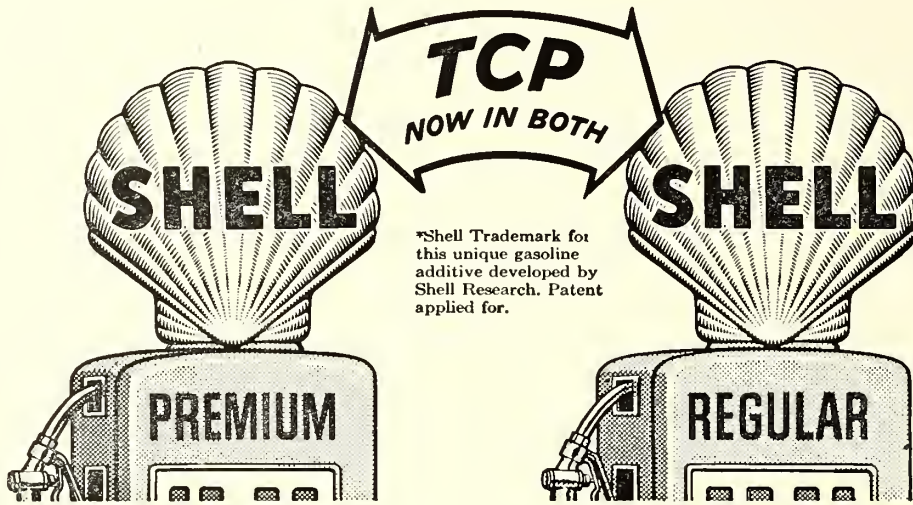
NORRIS CASUAL

McGREGOR

NUNN BUSH







*First introduced exclusively in  
Shell Premium Gasoline, **TCP** is now in  
regular grade Shell Gasoline, too.  
Gives performance never before  
possible with a regular grade fuel*

**King Oil Co.**

Shockley Ferry Road

**Home Oil Co.**

East River Street

JOBBERS OF SHELL PRODUCTS

Anderson, South Carolina

# Clemson's Basketball Hopes Bright

Clemson's 1955-56 varsity basketball players hope to vacate the cellar position their predecessors of the past two years have occupied in the Atlantic Coast Conference.

Coach Banks McFadden will again rely on high scoring Bill Yarborough (28.3 points per game) to pace his scorers, but newcomers to the varsity include high-scoring Vinnie Yockel off last winter's strong freshman team, six-six junior college center Gene Seay of North Greenville, six-six forward Ed Brinkley (ineligible last year) and transfer guard Tom Cameron, who scores points about like Yarborough.

Of course, all of last year's varsity players except Barry Ryan are still on hand, including rugged six-four forwards "Rock" Stone and Tommy Smith, guard Bruce Holzschuh and center Billy Riser. They played inspirational ball at times and looked great in the spring intrasquad contest.

Other sophomores who should help the varsity are six-four forward Ed Moncrief, six-five center Billy Williams and fancy dribbling guard Dick Yeary.

Clemson plays its most difficult schedule in history — 26 regular season games, including participation in the Charlotte (N. C.) Tournament opposite Boston University, Colgate, Davidson, Florida State, Mississippi State, Tennessee and Wake Forest; the Gator Bowl Tournament opposite Georgia, LSU and South Carolina; and the Senior Bowl Tournament opposite Miami, Memphis State and Spring Hill.

## 1955-56 BASKETBALL SCHEDULE

- Dec. 2—Duke, away  
Dec. 3—North Carolina, away  
Dec. 8—Georgia, away  
Dec. 13—N. Carolina State, home  
Dec. 16—Virginia, home  
Dec. 19, 20, 21—Charlotte, N. C. Tournament  
Dec. 28, 29—Gator Bowl, Jacksonville, Fla.  
Jan. 4, 5—Senior Bowl, Mobile, Ala.  
Jan. 7—Maryland, home  
Jan. 11—Duke, home  
Jan. 14—North Carolina, home  
Jan. 18—South Carolina, away  
Jan. 21—Furman, away  
Jan. 28—Wake Forest, home  
Jan. 30—The Citadel, away  
Feb. 3—Wake Forest, away  
Feb. 4—North Carolina State, away  
Feb. 6—The Citadel, home  
Feb. 13—Virginia, away  
Feb. 14—Maryland, away  
Feb. 21—South Carolina, home  
Feb. 23—Furman, home  
Mar. 1, 2, 3—Atlantic Coast Conference, Raleigh, N. C.

## CRANE CHEVROLET CO.

CHEVROLETS — OLDSMOBILES  
SALES — SERVICE

Your Chevrolet Dealer for 52 Years

EASLEY, SOUTH CAROLINA

Phone Easley 5746

## RIDDLE - JONES, INC.

FRIGIDAIRE  
ZENITH RADIO & TV  
FURNITURE

Phone CAnal 6-1531

N. Main St. Anderson, S. C.

## DUCKETT FUNERAL HOME

Courteous and Reliable Service

FUNERAL AMBULANCE

Central, South Carolina

JOHN G. DUCKETT, Class of '18



# HOWARD JOHNSON'S

LANDMARK FOR HUNGRY AMERICANS



U. S. 29 North — Super Highway at City Limits

GREENVILLE, S. C.



THE  
**Poinsett**  
HOTEL  
"Carolina's  
Finest"

Direction  
J. MASON ALEXANDER

**Mauldin Chevrolet Co.**

Your Local Chevrolet Dealer

NEW CARS USED CARS TRUCKS

WE SERVICE ALL MAKES CARS & TRUCKS

PENDLETON

3821

CLEMSON

5387

## COMPOSITE FOOTBALL SCHEDULE FOR 1955 . . . . .

TEAM	Week of Sept. 17	Week of Sept. 24	Week of Oct. 1	Week of Oct. 9	Week of Oct. 15	Week of Oct. 22	Week of Oct. 29	Week of Nov. 5	Week of Nov. 12	Week of Nov. 19	Week of Nov. 26
Presbyterian College	CLEMSON* Clemson			Davidson Davidson	Wofford Clinton	The Citadel Charleston	Catawba Oct. 28 Clinton	Stetson Deland	Appalach. State, Clinton		Newberry Nov. 24 Newberry
University of Virginia		CLEMSON Charlottesville	Geo. Wash. Charlottesville	Pennsylvania Richmond	V. M. I. Charlottesville	V. P. I. Roanoke	Vanderbilt Nashville	Pittsburgh Pittsburgh	Wake Forest Charlottesville	U. N. C. Chapel Hill	S. Carolina Charlottesville
University of Georgia	Mississippi Athens	Vanderbilt Athens	CLEMSON Clemson	U. N. C. Athens	Fla. State Tallahassee	Tulane Athens	Alabama Athens	Florida Jacksonville	Auburn Columbus		Ga. Tech. Atlanta
Rice		Alabama* Houston	L. S. U.* Houston	CLEMSON* Houston	S. M. U.* Dallas	Texas Austin	Kentucky Lexington	Arkansas Houston	Texas A&M Houston	T. C. U. Fort Worth	Baylor Houston
University of So. Carolina	Wofford* Columbia	Wake Forest W.-Salem	Navy Columbia	Furman Columbia	CLEMSON Columbia	Maryland College Park	Maryland College Park	U. N. C. Norfolk	Duke Columbia		Virginia Charlottesville
Wake Forest	V. P. I. Wake Forest	S. Carolina W.-Salem	W. Virginia Morgantown	Maryland College Park	N. C. State* Raleigh	U. N. C. Wake Forest	CLEMSON Clemson	W. & M. Wake Forest	Virginia Charlottesville	Duke Durham	
Virginia Poly. Inst.	Wake Forest Wake Forest	Pennsylvania Philadelphia	W. & M. Williamsburg	Fla. State Tallahassee	Richmond Blacksburg	Virginia Roanoke	Geo. Wash. Blacksburg	CLEMSON Roanoke	N. C. State Blacksburg		V. M. I. Nov. 24 Roanoke
University of Maryland	Missouri Columbia, Mo.	U.C.L.A. College Park	Baylor Waco	Wake Forest College Park	U. N. C. Chapel Hill	Syracuse Syracuse	S. Carolina College Park	L. S. U. College Park	CLEMSON Clemson	Geo. Wash. College Park	
Auburn		Chattanooga Auburn	Florida Auburn	Kentucky Birmingham	Ga. Tech. Atlanta	Furman Auburn	Tulane New Orleans	Miss. State Auburn	Georgia Columbus	CLEMSON Mobile	Alabama Birmingham
Furman	Newberry* Sept. 16 Greenville	Army West Point	Wofford* Spartanburg	S. Carolina Columbia	The Citadel Charleston	Auburn Auburn	N. C. State Greenville	Fla. State* Greenville		Davidson Greenville	CLEMSON Greenville

\* Night games.

Trailways takes you

**ALL THE WAY!**



*Ride New*

**AIR-SUSPENSION**

## **TRAILWAYS THRU-LINERS**

★ You board and leave your Trailways bus right in the heart of town—so simple and convenient for business or shopping trips. And what comfortable travel in these new buses! Air-suspension “springs” . . . deep, reclining seats

. . . cooled, constantly conditioned air. Trailways drivers are unexcelled in their record for safety . . . noted for their courtesy. Next time, go Trailways, and you’ll see why it’s known as the “Route of Southern Hospitality”.

Four Thru-Liners  
Daily to Dallas, Texas



Six Thru-Liners  
Daily to Norfolk, Va.



Three Thru Trips  
Daily to Columbia



Seven Thru Trips  
Daily to Charlotte, N. C.



Seven Trips Daily to  
New York City  
(Two Thru-Liners)



Six Trips Daily to  
Atlanta, Ga.  
(Six Thru-Liners)



For Charter or Schedule  
Information Call Your

**TRAILWAYS  
AGENT**

Phone CAnal 40921

**ANDERSON, S. C.**

## **CAROLINA SCENIC STAGES**

Spartanburg, South Carolina

Telephone 2-5631

HAMISH TURNER (Clemson Class '29) President



**TRAILWAYS**

*the route  
of the*

**THRU-LINERS**





*Light up a Lucky—  
it's light-up time!*

# **LUCKIES TASTE BETTER**

**Cleaner, Fresher, Smoother!**



*"IT'S  
TOASTED"  
to taste  
better!*